

Material: **Porcelain** | Appearance: **Pattern** | Application: **Walls and floors**

8

Colours

1

Finish

1

Tile size

Modestra

Modestra incorporates eight unique patterns in a refined palette of blue, green, and neutral tones, allowing designers to create striking visual rhythms in commercial or residential spaces. These designs offer endless layout options, transforming simple areas into visually captivating focal points perfect for cafes, retail environments, or high-end residential projects.



Shade variation: V2 moderate



















BMD55736

BMD55737

BMD55738

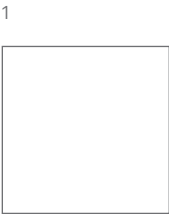
BMD55739



BMD55740

BMD55741

BMD55742

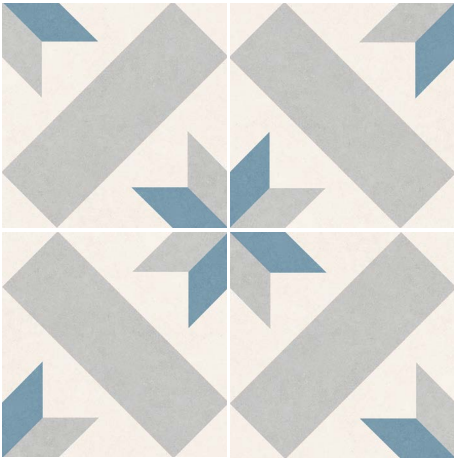
BMD55743



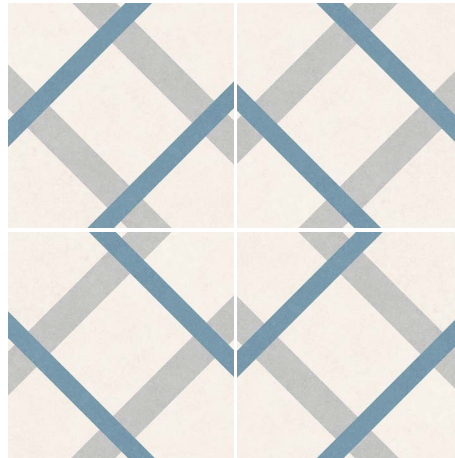
Sizes (mm)	Thickness	 PTV Wet Slider 96	 PTV Wet Slider 55
1 150x150	-	Natural ≥36 PTV	Natural 25-35 PTV



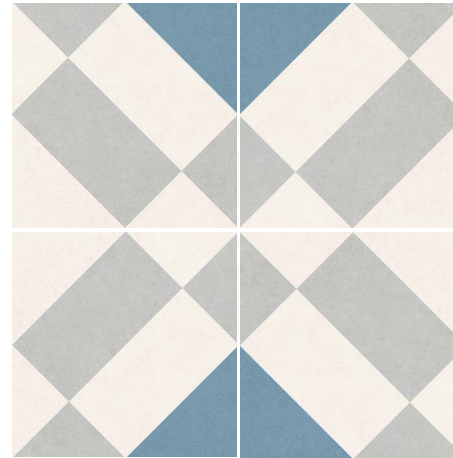
Modestra layouts



BMD55736



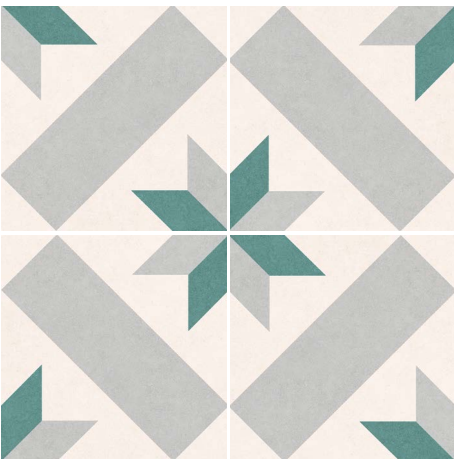
BMD55737



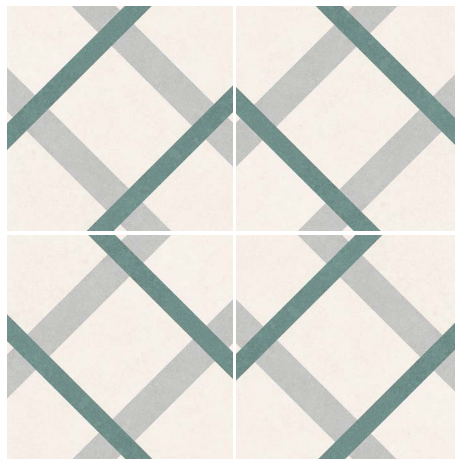
BMD55738



BMD55739



BMD55740



BMD55741



BMD55742



BMD55743

LRV and PTV values can vary batch to batch, please contact for advice.
Switch colours may vary, samples should be requested.

www.grestec.co.uk | T: 0345 130 2241 | E: sales@grestec.co.uk

Find us on:    



Modestra

Technical data sheet - ISO 10545 average values

3	Water absorption	>0.5%
4	Breaking strength	>1300N
	Pendulum test - Slider 96 shod (wet) Pendulum test - Slider 55 barefoot (wet)	≥36PTV 25-35PTV

Sustainability information



Cleaning and maintenance advice

Initial washing

The initial washing is fundamental for good treatment results. The initial washing is aimed at removing any laying residues and building grime.

Product: Deterdek Pro

Routine maintenance

The aim of the routine maintenance is to remove dirt and scuff marks. Must be carried out regularly.

Product: Cleaner Pro

Special maintenance

Special maintenance is carried out in case of very stubborn dirt, when the routine maintenance is not enough to restore the original look of the surface.

Product: PS/87 Pro

Please see www.filasolutions.com for methods of use, dilution and coverage.