

Material: **Ceramic** | Appearance: **Uniform** | Application: **Walls**

2 Colours   1 Finish   2 Tile sizes

# Yana

A simple and light handmade ceramic piece with a minimalist character. Play with light and shadow with these 3D ceramic blocks, available in warm, earthy terracotta tones. The pieces may have imperfections typical of handcrafted products.



Shade variation: V2 - Moderate



OOCF51588

OOCF51589



LRV and PTV values can vary batch to batch, please contact for advice.  
Swatch colours may vary, samples should be requested.

www.grestec.co.uk | T: 0345 130 2241 | E: sales@grestec.co.uk

Find us on:    



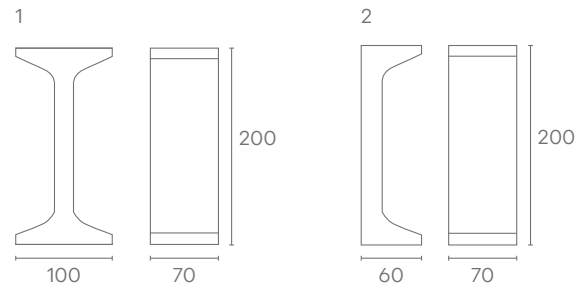
# Yana



Wall: OOCF51589

## Formats

	Sizes (mm)	Finishes
1	100x200x70	Natural
2	60x200x70	Natural



Material: **Ceramic** | Appearance: **Uniform** | Application: **Walls**



# Yana



Above  
Wall: OOCF51588 OOCF51589

Right  
Wall: OOCF51588



Above  
Wall: OOCF51588 OOCF51589

LRV and PTV values can vary batch to batch, please contact for advice.  
Swatch colours may vary, samples should be requested.

[www.grestec.co.uk](http://www.grestec.co.uk) | T: 0345 130 2241 | E: [sales@grestec.co.uk](mailto:sales@grestec.co.uk)

Find us on:    

Material: **Ceramic** | Appearance: **Uniform** | Application: **Walls**



# Yana

## Technical data sheet - ISO 10545 average values

3	Water absorption	10-13%
7	Resistance to abrasion	Complies
8	Linear thermal expansion	$5,2 \times 10^{-6} / ^\circ\text{C}$
12	Frost resistant	Resistant
13	Chemical resistance	UA ULA UHA

## Sustainability information



## Cleaning and maintenance advice

### Initial washing

The initial washing is fundamental for good treatment results. The initial washing is aimed at removing any laying residues and building grime.

Product: Cloth

### Routine maintenance

The aim of the routine maintenance is to remove dirt and scuff marks. Must be carried out regularly.

Product: Cleaner Pro

Please see [www.filasolutions.com](http://www.filasolutions.com) for methods of use, dilution and coverage.

LRV and PTV values can vary batch to batch, please contact for advice.  
Swatch colours may vary, samples should be requested.

[www.grestec.co.uk](http://www.grestec.co.uk) | T: 0345 130 2241 | E: [sales@grestec.co.uk](mailto:sales@grestec.co.uk)

Find us on:



# Yana

## Installation advice

### Thermal expansion

One of the essential premises when working with different materials is to control their behavior in relation to temperature changes in order to avoid fractures between them.

The thermal expansion coefficient of ceramic lattices is  $5.2 \times 10^{-6} / 10 \text{ C}$  and must be taken into account in relation to the thermal expansion coefficient of the supporting material (for example, the thermal expansion coefficient of concrete is  $12 \times 10^{-6} / 10 \text{ C}$ ).

Therefore, the general recommendation is to introduce expansion joints every 16 m<sup>2</sup> by dividing the surface into panels no longer than 4 meters.

### Gripping material and application

The bond between the trusses can be made with Portland cement mortar and fine sieved sand at a 1:3 ratio or by using polyurethane adhesive resins such as "Sikaflex". The choice of joint will depend on the dimensional stability of the truss, whether or not it has side recesses to embed the reinforcement, the interior or exterior installation site and the aesthetic finish of the truss panel. If we opt for cement mortar, we can leave the joints recessed or flush according to each criterion (recessing reinforces the shadows between pieces and flushing accentuates the "perforated plane" effect of the truss assembly).

### General principles of placement

We recommend setting up the latticework from a module with maximum dimensions of 325x325 cm. It is advisable to establish an expansion joint between truss modules, approximately every 4 m. It is recommended that the louvre panel be embraced perimetrically to give more stability to the whole. For the application of the lattices on the facade, it is advisable to use MURFOR type anchors, both vertically and horizontally. As a general rule, we recommend placing mechanical anchors every three vertical rows and at staggered intervals horizontally. For the application of lattices in interiors, we can use 3 mm diameter stainless steel or fiberglass threaded rod in all the horizontal joints of the composition. The reinforcement will be embedded in the cement mortar and if we use silicone, it is necessary that the lattice has a perimeter groove.

For each specific composition and project, the structural advice of a specialist will be essential

### Cleaning Clean the exposed surface with a sponge and water during the installation process

Once the installation is finished, after 8 hours and with the bonding material dry, humidify the installed pieces during the following 2 days and apply specific oil for muds and terracottas.

### Important information

The size of the lattice may vary by 2-4 mm between different pieces of the same finish.

For this reason, it is recommended not to carry out any prior assembly to insert the trusses until they are received on site.

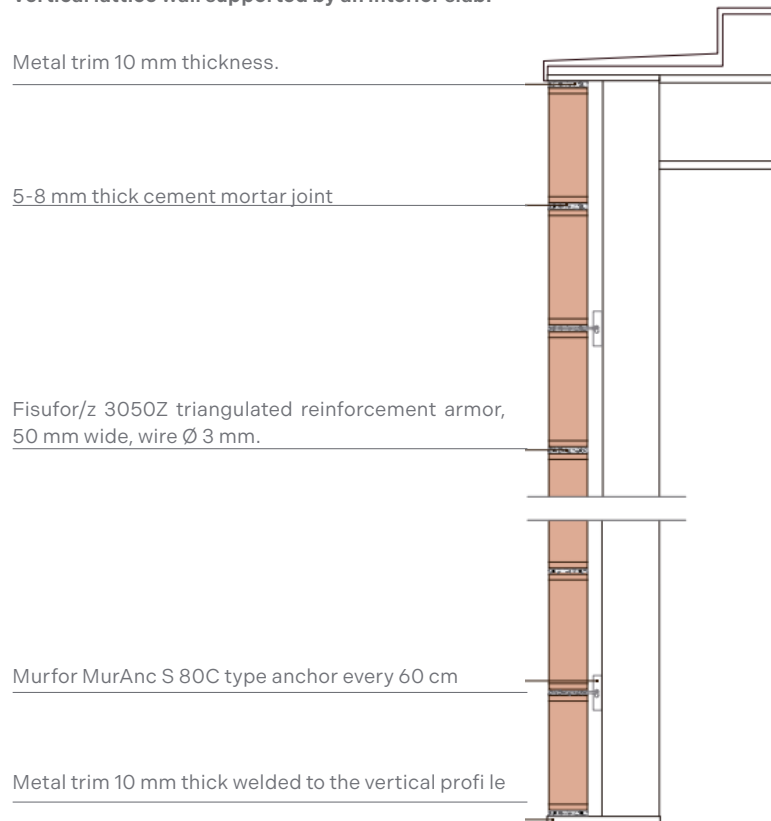
No claims will be accepted once the materials have been installed.



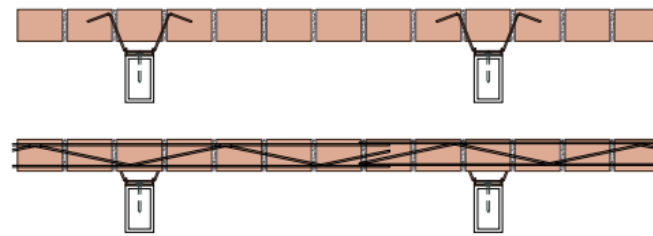
# Yana

## Installation advice

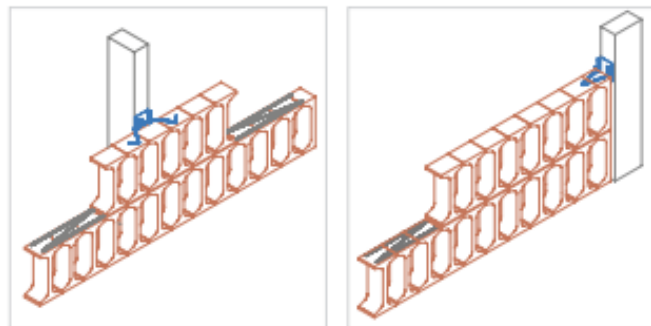
### Vertical lattice wall supported by an interior slab.



### Horizontal section of vertical wall



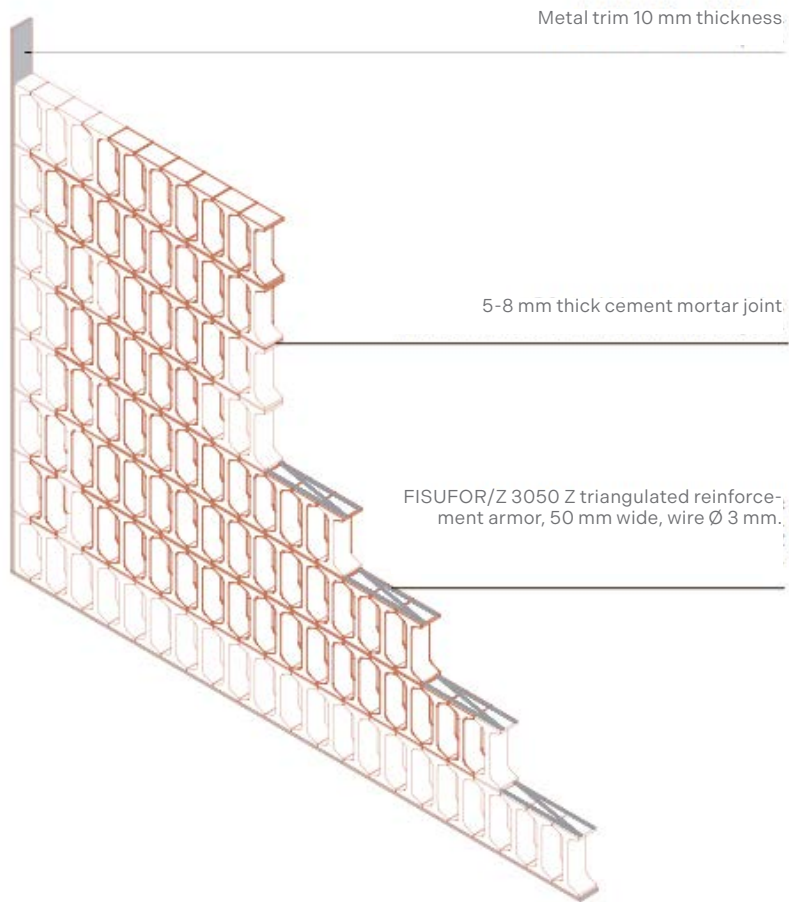
### Murfor MurAnc S 80C type



Material: **Ceramic** | Appearance: **Uniform** | Application: **Walls**



# Yana



LRV and PTV values can vary batch to batch, please contact for advice.  
Swatch colours may vary, samples should be requested.

[www.grestec.co.uk](http://www.grestec.co.uk) | T: 0345 130 2241 | E: [sales@grestec.co.uk](mailto:sales@grestec.co.uk)

Find us on:    