

Material: **Porcelain** | Appearance: **Timber** | Application: **Walls and floor**

4

3

3

Colours
Finishes
Tile sizes

Dering 2.0

Dering 2.0 skillfully emulates the captivating visual allure and textured richness of oak planks. This collection offers a selection of four inviting and organic tones, where the intricate graphic texture seamlessly blends elegance, authenticity, and realism.



Shade variation: V2 - Moderate



GRCA37790



GRCA37791



GRCA37792



GRCA37793

THK R11/C



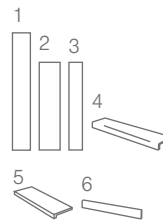
GRCA37791THK



GRCA37792THK

* 300x1200THK is only available in GRCA37766THK and GRCA37767THK

	Size (mm)	> <	Finishes		
1	260x1600	9mm	BRU R10	-	-
2	300x1200THK*	20mm	-	-	THK R11/C ≥42 PTV *
3	200x1200	9mm	BRU R10	NAT R11/C ≥36 PTV	-
4	300x1200x40 ST L	9mm	BRU R10	-	-
5	45x105x600 ST	9mm	BRU R10	-	-
6	65x600 SK	9mm	BRU R10	-	-



Dering 2.0 GRCA37791



LRV and PTV values can vary batch to batch, please contact for advice. Swatch colours may vary, samples should be requested.

www.grestec.co.uk | T: 0345 130 2241 | E: sales@grestec.co.uk

Find us on:

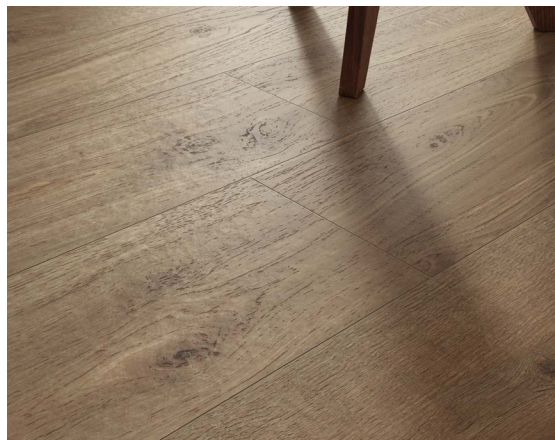


Dering 2.0



Above
Dering 2.0 GRCA37791

Right
Dering 2.0 GRCA37793



Above
Dering 2.0 GRCA37792



Dering 2.0

Technical data sheet - ISO 10545 average values

2	Sizes	Conforms
3	Water absorption	Conforms
4	Breakage resistance	Conforms
4	Modulus of rupture	Conforms
6	Scratch resistance	<150 mm ³
8	Linear thermal expansion	6,8 MK-1
9	Thermal shock resistance	Resistant
13	Chemical resistance	Conforms
14	Stain resistance	Resistant
	Slip resistance DIN 51130/ DIN 51097	BRU R10 NAT R11/C THK R11/C
	Pendulum test (Slider 96) Shod	NAT ≥36PTV THK ≥42PTV

Sustainability information



Cleaning and maintenance advice

Initial washing

The initial washing is fundamental for good treatment results. The initial washing is aimed at removing any laying residues and building grime.

Product: Deterdek Pro

Routine maintenance

The aim of the routine maintenance is to remove dirt and scuff marks. Must be carried out regularly.

Product: Cleaner Pro

Special maintenance

Special maintenance is carried out in case of very stubborn dirt, when the routine maintenance is not enough to restore the original look of the surface.

Product: PS/87 Pro

Please see www.filasolutions.com for methods of use, dilution and coverage.