

TAZA

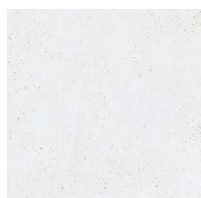
12
COLOURS2
FINISHES2
TILE SIZES

Taza Floor is inspired by micro-terrazzo tiles, originally developed in Venice, in a 900x900 format. A collection suitable for use on walls and floors. Taza Wall is inspired by the typical ceramics found in southern Spain and northern Morocco; a matt ceramic tile collection in a 60x246 format. The Taza ranges feature 6 colours in white, silver, sand, grey, green and blue.



V2 moderate shade variation

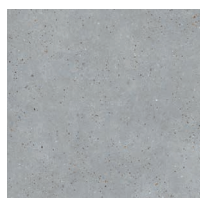
PORCELAIN / TAZA FLOOR - 900x900



PHBA44660



PHBA44661



PHBA44662



PHBA44663



PHBA44664



PHBA44665

CERAMIC / TAZA WALL - 60x246, 15x246 PEN



PHBB44666



PHBB44667



PHBB44668



PHBB44669

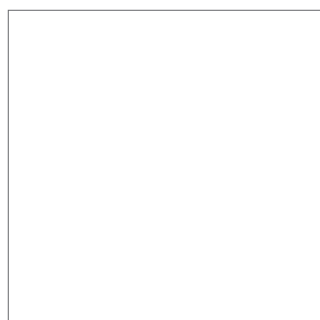


PHBB44670



PHBB44671

1



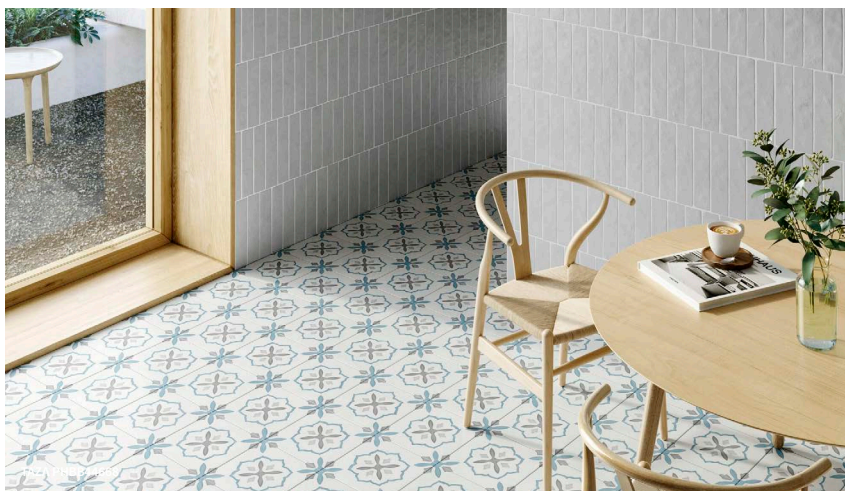
	SIZES (mm)	> <	FINISHES
1	900x900	10mm	MATT (R10) PTV LOW SLIP RISK
2	60x246	9mm	MATT
3	15x246 PEN	8.5mm	MATT

LRV and PTV values can vary batch to batch, please contact for advice. Swatch colours may vary, samples should be requested.

Find us on:



www.grestec.co.uk | T: +44 (0)345 130 2241 | E: sales@grestec.co.uk



LONDON STUDIOS

Grestec has its own Tile Studios in London where architects and designers can visit to discover the latest tile ranges and concepts.

Full of new and existing collections suitable for all situations; commercial, retail and residential. Our studio spaces are an excellent environment for ideas, solutions and project discussions, with plentiful samples to take away immediately or simply order for next day delivery. Further details can be found on our website.

STUDIO 329 (APPOINTMENT ONLY)
Business Design Centre, 52 Upper Street,
Islington, London, N1 0QH

POP-UP STUDIO (UNMANNED/ WALK-INS)
The Building Centre, 26 Store Street,
London, WC1E 7BT



TECHNICAL DATA SHEET - ISO 10545 AVERAGE VALUES

		PORCELAIN	CERAMIC		PORCELAIN	CERAMIC
3	Water absorption	< 0,5 %	-	12	Frost resistance	Conforms
4	Modulus of rupture	> 35 N/mm ²	-	13	Chemical resistance	HA-LA-A
4	Breaking strength	> 1300 N	-	14	Stain resistance	CLASS 5
7	Surface abrasion resistance	4	-		Slip resistance DIN 51130	R10
11	Crazing resistance	Conforms	-		Shade variation	V2
					Recycled content	37% 40%

SUSTAINABILITY INFORMATION



CLEANING + MAINTENANCE ADVICE - PORCELAIN

INITIAL WASHING

The initial washing is fundamental for good treatment results. The initial washing is aimed at removing any laying residues and building grime.

Product: Deterdek

ROUTINE MAINTENANCE

The aim of the routine maintenance is to remove dirt and scuff marks. Must be carried out regularly.

Product: FilaCleaner

SPECIAL MAINTENANCE

Special maintenance is carried out in case of very stubborn dirt, when the routine maintenance is not enough to restore the original look of the surface.

Product: Fila PS/87

Please see www.filasolutions.com for methods of use, dilution and coverage.

CLEANING + MAINTENANCE ADVICE - CERAMIC

INITIAL WASHING

The initial washing is fundamental for good treatment results. The initial washing is aimed at removing any laying residues and building grime.

Product: Cloth

ROUTINE MAINTENANCE

The aim of the routine maintenance is to remove dirt and scuff marks. Must be carried out regularly.

Product: FilaCleaner

Please see www.filasolutions.com for methods of use, dilution and coverage.

