

Material: **Ceramic** | Appearance: **Handcrafted** | Application: **Walls**

Macari

Macari brings handcrafted character to ceramics with a 65×130 mm gloss format and watercolour-style surface variation. A rich, trend-led palette adds depth and movement, creating an artisanal finish across wall applications. Designed for hospitality, residential and commercial interiors seeking expression, texture and individuality.



Shade variation: V3 high



TSBB49085
LRV 80



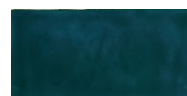
TSBB49086
LRV 62



TSBB49087
LRV 37



TSBB49088
LRV 8



TSBB49089
LRV 8



TSBB49090
LRV 32



TSBB49091
LRV 28



TSBB49092
LRV 13



TSBB49093
LRV 10



TSBB49094
LRV 10



TSBB49095
LRV 10



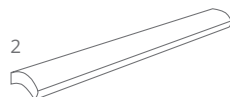
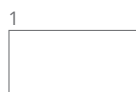
TSBB49096
LRV 61



TSBB49097
LRV 10



TSBB49098
LRV 33







Sizes (mm)	Thickness	Finishes
1 65x130	9mm	Gloss
2 12x261 PENB	9mm	Gloss



LRV and PTV values can vary batch to batch, please contact for advice. PTV values refer to Slider 96 Shod - Wet (unless stated). Swatch colours may vary, samples should be requested.

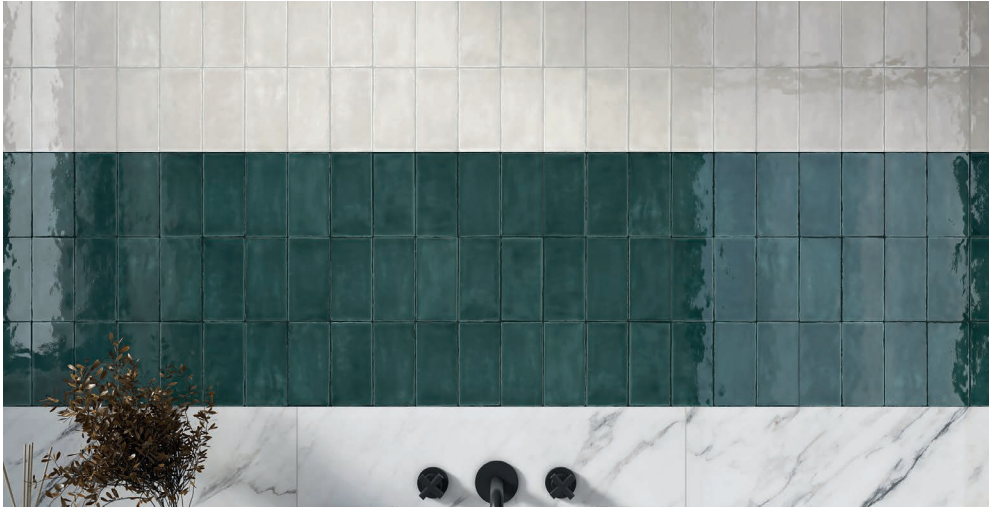
www.grestec.co.uk | T: 0345 130 2241 | E: sales@grestec.co.uk

Find us on:    

Material: **Ceramic** | Appearance: **Handcrafted** | Application: **Walls**



Macari



Above
Macari TSBB49093

Right
Macari TSBB49088



Above
Macari TSBB49098

LRV and PTV values can vary batch to batch, please contact for advice. PTV values refer to Slider 96 Shod – Wet (unless stated). Swatch colours may vary, samples should be requested.

www.grestec.co.uk | T: 0345 130 2241 | E: sales@grestec.co.uk

Find us on:    



Macari

Technical data sheet - ISO 10545 average values

3	Water absorption	AA>10% group BIII
4	Modulus of rupture	RM> 150kg/cm2
11	Crazing resistance	Resistant
13	Chemical resistance	Conforms
14	Stain resistance	Conforms

Sustainability information



Cleaning and maintenance advice

Initial washing

The initial washing is fundamental for good treatment results. The initial washing is aimed at removing any laying residues and building grime.

Product: Cloth

Routine maintenance

The aim of the routine maintenance is to remove dirt and scuff marks. Must be carried out regularly.

Product: Cleaner Pro

Please see www.filasolutions.com for methods of use, dilution and coverage.