

Material: **Porcelain** | Appearance: **Stone** | Application: **Walls and floors**

# Lucerne

Lucerne presents a selection of stones that explores the age-old relationship between nature and architecture; offering inspiration for contemporary projects offering exciting visual and tactile experiences.



Shade variation: V2 - V4



KAAL49442



KAAL49443



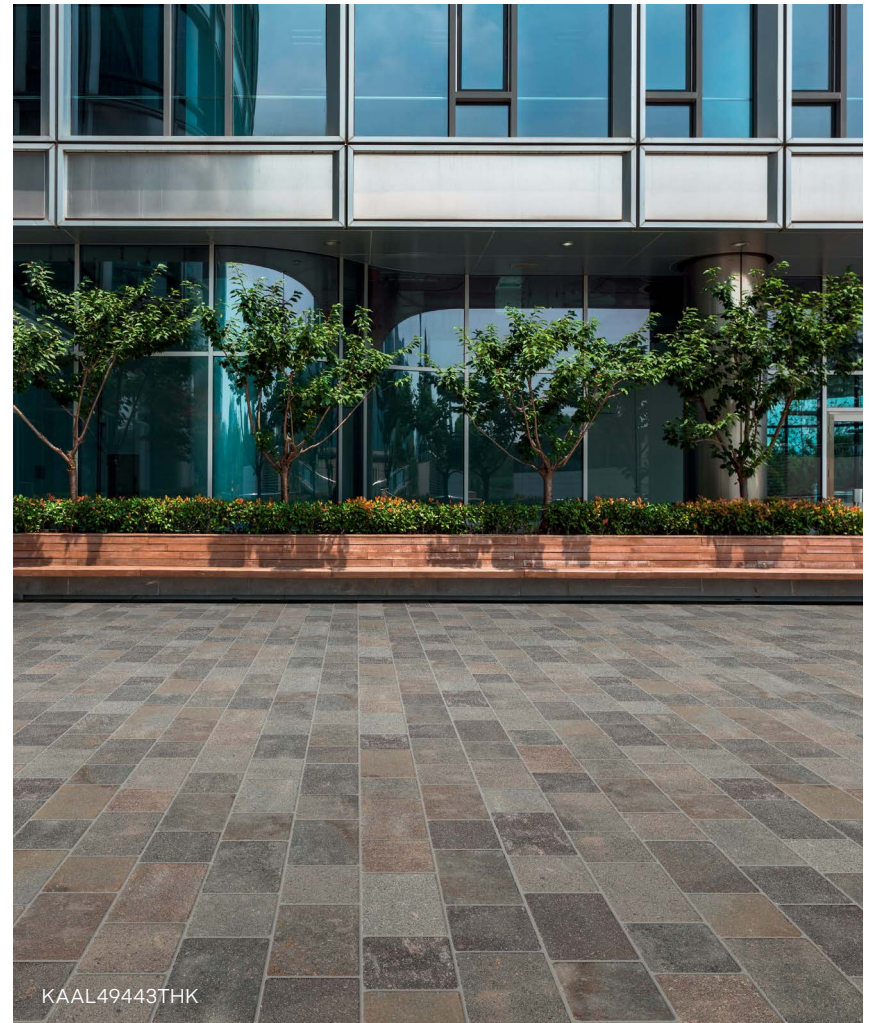
KAAL49455



KAAL49456



LRV and PTV values can vary batch to batch, please contact for advice.  
Switch colours may vary, samples should be requested.



KAAL49443THK

[www.grestec.co.uk](http://www.grestec.co.uk) | T: 0345 130 2241 | E: [sales@grestec.co.uk](mailto:sales@grestec.co.uk)

Find us on:    



# Lucerne



KAAL49443THK

## Formats

												KAAL49442	KAAL49443	KAAL49455	KAAL49456
		Sizes(mm)	>  <			Finishes									
1	800x1800	10mm	NAT (R10/B)   ≥36 PTV	AS (R11/C)	-	-	-	-	-	-	-	■	■	■	■
2	800x1800 THK	20mm	-	-	-	THK (R11)	-	-	-	-	-	■	■	■	■
3	600x1200 THK	20mm	-	-	-	THK (R11)	-	-	-	-	-	■	■	■	■
4	600x1200	10mm	NAT (R10/B)   ≥36 PTV	AS (R11/C)	POL*	-	-	-	-	-	-	■	■	■	■
5	400x1200 THK	20mm	-	-	-	THK (R11)	-	-	-	-	-	■	■	■	■
6	300x1200	10mm	NAT (R10/B)   ≥36 PTV	AS (R11/C)	-	-	-	-	-	-	-	■	■	■	■
7	400x800	10mm	NAT (R10/B)   ≥36 PTV	AS (R11/C)	-	-	-	-	-	-	-	■	■	■	■
8	600x600 THK	20mm	-	-	-	THK (R11)	-	-	-	-	-	■	■	■	■
9	600x600	10mm	NAT (R10/B)   ≥36 PTV	-	-	-	-	-	-	-	-	■	■	■	■
10	300x600	10mm	NAT (R10/B)   ≥36 PTV	AS (R11/C)	-	-	-	-	-	-	-	■	■	■	■
11	202x304 THKTUM	20mm	-	-	-	-	-	-	-	-	-	■	■	■	■
12	202x202 THKTUM	20mm	-	-	-	-	-	-	-	-	-	■	■	■	■
13	300x600 MOSBRKR	10mm	NAT (R10/B)   ≥36 PTV	-	-	-	-	-	-	-	-	■	■	■	■
14	255x295 MOSHEX	10mm	NAT (R10/B)   ≥36 PTV	-	-	-	-	-	-	-	-	■	■	■	■
15	150x600 MOSSTPR	10mm	NAT (R10/B)   ≥36 PTV	-	-	-	-	-	-	-	-	■	■	■	■
16	290x330 MOS3D	10mm	NAT (R10/B)   ≥36 PTV	-	-	-	-	-	-	-	-	■	■	■	■
17	MOSBRK 75x150 on 300x300 MESH	10mm	NAT (R10/B)   ≥36 PTV	-	-	-	-	-	-	-	-	■	■	■	■
18	60x600 SK	10mm	NAT (R10/B)   ≥36 PTV	-	-	-	-	-	-	-	-	■	■	■	■

\*POL finish only available in KAAL49443





Material: **Porcelain** | Appearance: **Stone** | Application: **Walls and floors**



# Lucerne



Above  
Wall: KAAL49442

Right  
Floor: KAAL49443



Above  
Floor: KAAL49443

LRV and PTV values can vary batch to batch, please contact for advice.  
Swatch colours may vary, samples should be requested.

[www.grestec.co.uk](http://www.grestec.co.uk) | T: 0345 130 2241 | E: [sales@grestec.co.uk](mailto:sales@grestec.co.uk)

Find us on:    



# Lucerne

## Technical data sheet - ISO 10545 average values

2	Sizes	Conforms
3	Water absorption	$E \leq 0.04\%$
4	Bending strength	54,6 N/mm <sup>2</sup>
6	Deep abrasion resistance	<131 mm <sup>3</sup>
8	Coefficient of linear thermal expansion	$\alpha = 7 \times 10^{-6} / ^\circ\text{C}^{-1}$
9	Thermal shock resistance	No damage
12	Frost resistance	Resistant
13	Chemical resistance	A - LA
14	Stain resistance	Class 5
	Slip resistance	NAT R10   $\geq 36$ PTV AS R11/C THK R11/C
	Shade variation	V4- KAAL49442 V2- KAAL49443 V3- KAAL49443TUM

## Sustainability information



### Cleaning and maintenance advice

#### Initial washing

The initial washing is fundamental for good treatment results. The initial washing is aimed at removing any laying residues and building grime.  
Product: Deterdek Pro

#### Routine maintenance

The aim of the routine maintenance is to remove dirt and scuff marks. Must be carried out regularly.  
Product: Cleaner Pro

#### Special maintenance

Special maintenance is carried out in case of very stubborn dirt, when the routine maintenance is not enough to restore the original look of the surface.  
Product: PS/87 Pro

Please see [www.filasolutions.com](http://www.filasolutions.com) for methods of use, dilution and coverage.