

Material: **Porcelain** | Appearance: **Stone** | Application: **Walls and floors**



# Chateau One

Chateau One was born from the study of a natural element with the aim to discover the dual soul of stone. Four stone effect colours, available in natural R10 and a lappato finish suitable for both wall and floor applications.



Shade variation: V2 - moderate



KAAC49413  
LRV 44



KAAC49414  
LRV 8

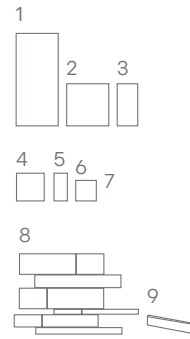


KAAC49415  
LRV 34

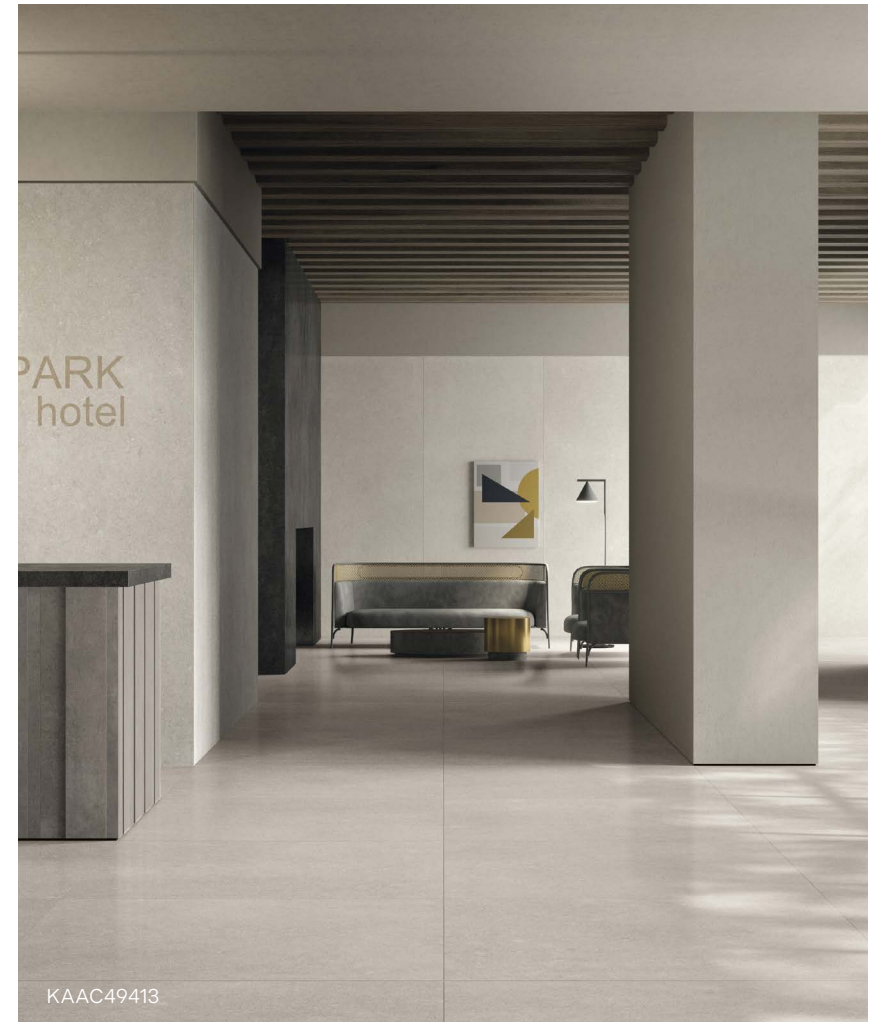


KAAC49416  
LRV 20

	Sizes (mm)	>  <	Finishes	
1	1200x2800	6mm	NAT (R10)   $\geq 36$ PTV	LAP
2	1200x1200	10mm	NAT (R10)   $\geq 36$ PTV	LAP
3	600x1200	10mm	NAT (R10)   $\geq 36$ PTV	LAP
4	800x800	10mm	NAT (R10)   $\geq 36$ PTV	LAP
5	400x800	10mm	NAT (R10)   $\geq 36$ PTV	LAP
6	600x600	10mm	NAT (R10)   $\geq 36$ PTV	LAP
7	MOS3D on 290x330	10mm	NAT (R10)   $\geq 36$ PTV	-
8	MIXMS - 300x800 (2), 300x400 (2), 200x1200, 100x400, 100x800, 200x400, 200x800, 100x1200	10mm	NAT (R10)   $\geq 36$ PTV	LAP
9	46x600 SK1	10mm	NAT (R10)   $\geq 36$ PTV	-



LRV and PTV values can vary batch to batch, please contact for advice. Swatch colours may vary, samples should be requested.



KAAC49413

www.grestec.co.uk | T: 0345 130 2241 | E: sales@grestec.co.uk

Find us on:

Material: **Porcelain** | Appearance: **Stone** | Application: **Walls and floors**

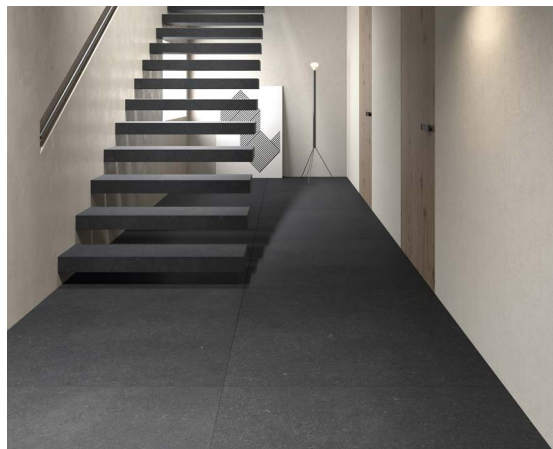


# Chateau One



Above  
Floor: KAAC49415

Right  
Floor: KAAC49414



Above  
Wall: KAAC49416  
Floor: KAAC49416

LRV and PTV values can vary batch to batch, please contact for advice.  
Swatch colours may vary, samples should be requested.

[www.grestec.co.uk](http://www.grestec.co.uk) | T: 0345 130 2241 | E: [sales@grestec.co.uk](mailto:sales@grestec.co.uk)

Find us on:    



# Chateau One

Technical data sheet - ISO 10545 average values

2	Sizes	Conforms
3	Water absorption	E<=0.04%
4	Bending strength	53 N/mm²
6	Deep abrasion resistance	<128mm³
8	Coefficient of linear thermal expansion	a=7x10-6/°C <sup>-1</sup>
9	Thermal shock resistance	No damage
12	Frost resistance	Resistant
13	Chemical resistance	UA - UBL - UHB
14	Stain resistance	Class 5
	Slip resistance	Nat R10 ≥36 PTV WET

Sustainability information



Cleaning and maintenance advice

Initial washing

The initial washing is fundamental for good treatment results. The initial washing is aimed at removing any laying residues and building grime.  
Product: Deterdek Pro

Routine maintenance

The aim of the routine maintenance is to remove dirt and scuff marks. Must be carried out regularly.  
Product: Cleaner Pro

Special maintenance

Special maintenance is carried out in case of very stubborn dirt, when the routine maintenance is not enough to restore the original look of the surface.  
Product: PS/87 Pro

Please see [www.filasolutions.com](http://www.filasolutions.com) for methods of use, dilution and coverage.