

Material: **Porcelain** | Appearance: **Stone** | Application: **Walls and floors**

3
Colours

4
Finishes

11
Tile sizes

Lamorran Two

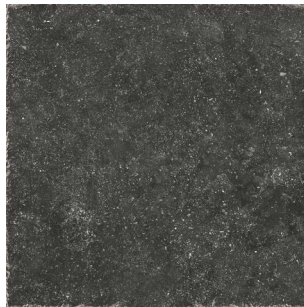
Lammoran Two presents a combination of stone and concrete effects, in three colours , four surface finishes and a soft tumbled or hard tumbled, uneven edge. Lammoran Two offers a complete range, guided by a perfectly harmonious aesthetics, suitable for both wall and floor applications.



Shade variation: V2 moderate



KAAF49425



KAAF49426



KAAF49427



Lamorran Two KAAF49426



LRV and PTV values can vary batch to batch, please contact for advice. PTV values refer to Slider 96 Shod - Wet (unless stated). Swatch colours may vary, samples should be requested.

www.grestec.co.uk | T: 0345 130 2241 | E: sales@grestec.co.uk

Find us on:

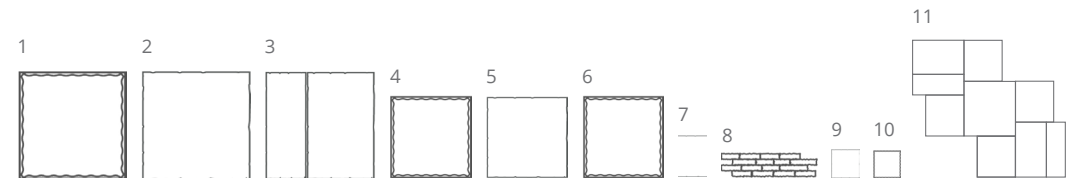


Lamorran Two



Formats

	Sizes (mm)	> <		Finishes		
1	800x800 STUM	10mm	NAT (R10)	LAP	-	-
2	800x800 HTUM	10mm	NAT (R10)	LAP	-	-
3	300x800/500x800 HTUM	10mm	-	LAP	-	-
4	600x600 STUM	10mm	NAT (R10)	LAP	AS (R11/C)	-
5	600x600 HTUMB	10mm	NAT (R10)	LAP	-	-
6	600x600 THK	20mm	-	-	-	THK (R11/C)
7	202x304 THK	20mm	-	-	-	THK (R11/C)
8	150x600 MOSBRK HTUM	10mm	NAT (R10)	-	-	-
9	202x202THK	20mm	-	-	-	THK (R11/C)
10	200x200 STUM	10mm	NAT (R10)	-	-	-
11	MODMIX 300x800, 500x800, 800x800, 600x600	10mm	NAT (R10)	LAP	-	-



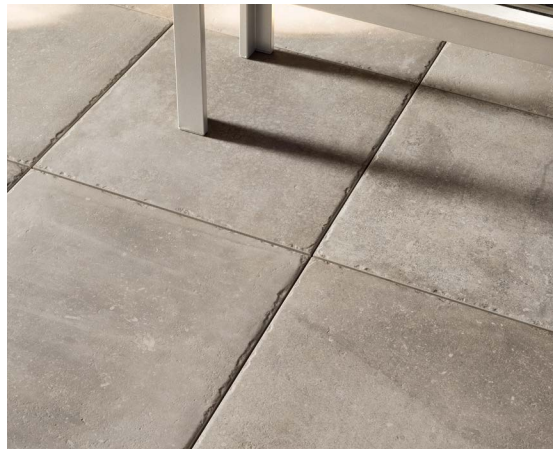


Lamorran Two



Above
Lamorran Two KAAF49425

Right
Lamorran Two KAAF49427



Above
Lamorran Two KAAF49426



Lamorran Two

Technical data sheet - ISO 10545 average values

2	Sizes	Conforms
3	Water absorption	Conforms
4	Bending strength	53 N/mm ²
6	Deep abrasion resistance	Conforms
8	Coefficient of linear thermal expansion	$a=7 \times 10^{-6} / ^\circ\text{C}-1$
9	Thermal shock resistance	Conforms
12	Frost resistance	Conforms
13	Chemical resistance	A - LA - HA
14	Stain resistance	Class 5
	Slip resistance	NAT R10 AS R11/C

Sustainability information



Cleaning and maintenance advice

Initial washing

The initial washing is fundamental for good treatment results. The initial washing is aimed at removing any laying residues and building grime.
Product: Deterdek Pro

Routine maintenance

The aim of the routine maintenance is to remove dirt and scuff marks. Must be carried out regularly.
Product: Cleaner Pro

Special maintenance

Special maintenance is carried out in case of very stubborn dirt, when the routine maintenance is not enough to restore the original look of the surface.
Product: PS/87 Pro

Please see www.filasolutions.com for methods of use, dilution and coverage.