

Material: **Porcelain** | Appearance: **Stone effect** | Application: **Walls and floors**

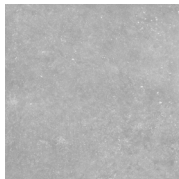


# Lamorran One

Lamorran One presents a combination of stone and concrete effects, in three colours and three surface finishes. Lamorran One offers a complete range, guided by a perfectly harmonious aesthetics, suitable for both wall and floor applications.



Shade variation: V2 - Moderate



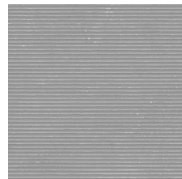
KAAB49405



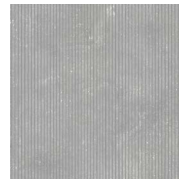
KAAB49405T1



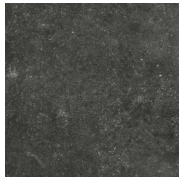
KAAB49405T2



KAAB49405T3



KAAB49405T4



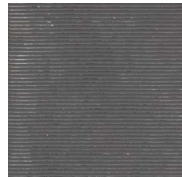
KAAB49406



KAAB49406T1



KAAB49406T2



KAAB49406T3



KAAB49406T4



KAAB49407



KAAB49407T1



KAAB49407T2



KAAB49407T3



KAAB49407T4



LRV and PTV values can vary batch to batch, please contact for advice.  
Swatch colours may vary, samples should be requested.

[www.grestec.co.uk](http://www.grestec.co.uk) | T: 0345 130 2241 | E: [sales@grestec.co.uk](mailto:sales@grestec.co.uk)

Find us on:    



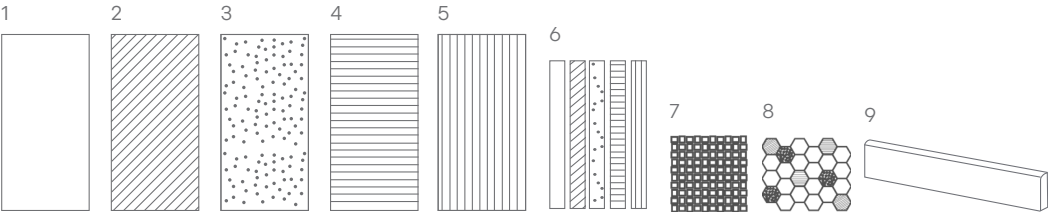
# Lamorran One



Floor: KAAB49406

### Formats

	Sizes (mm)	>  <		Finishes	
1	600x1200	10mm	NAT (R10)	LAP	AS (R11/C)
2	600x1200 T1	10mm	NAT (R10)	-	-
3	600x1200 T2	10mm	NAT (R10)	-	-
4	600x1200 T3	10mm	NAT (R10)	-	-
5	600x1200 T4	10mm	NAT (R10)	-	-
6	50x400 MIX	10mm	NAT (R10)	-	-
7	MOSBKT 26x30 on 300x300 MESH	10mm	NAT (R10)	-	-
8	MIXHEX 70x70 on 255x295 MESH	10mm	NAT (R10)	-	-
9	46x600 SK	10mm	NAT (R10)	-	-





Material: **Porcelain** | Appearance: **Stone effect** | Application: **Walls and floors**

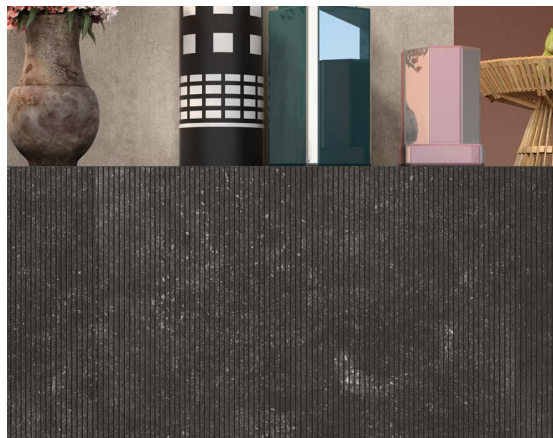


# Lamorran One



Above  
Floor: KAAB49407  
Wall: KAAB49407

Right  
Wall: KAAB49406T2



Above  
Wall: KAAB49406

LRV and PTV values can vary batch to batch, please contact for advice.  
Swatch colours may vary, samples should be requested.

[www.grestec.co.uk](http://www.grestec.co.uk) | T: 0345 130 2241 | E: [sales@grestec.co.uk](mailto:sales@grestec.co.uk)

Find us on:    



# Lamorran One

## Technical data sheet - ISO 10545 average values

2	Sizes	Conforms
3	Water absorption	Conforms
4	Bending strength	53 N/mm <sup>2</sup>
6	Resistance to deep abrasion	Conforms
8	Linear thermal expansion	$\alpha = 7 \times 10^{-6} / ^\circ\text{C} \cdot 1$
9	Thermal shock resistance	Conforms
12	Frost resistance	Conforms
13	Chemical resistance	A - LA - HA
14	Stain resistance	Class 5
	Slip resistance DIN 51130/ DIN 51097	NAT R10 AS R11/C

## Sustainability information



## Cleaning and maintenance advice

### Initial washing

The initial washing is fundamental for good treatment results. The initial washing is aimed at removing any laying residues and building grime.

Product: Deterdek Pro

### Routine maintenance

The aim of the routine maintenance is to remove dirt and scuff marks. Must be carried out regularly.

Product: Cleaner Pro

### Special maintenance

Special maintenance is carried out in case of very stubborn dirt, when the routine maintenance is not enough to restore the original look of the surface.

Product: PS/87 Pro

Please see [www.filasolutions.com](http://www.filasolutions.com) for methods of use, dilution and coverage.