

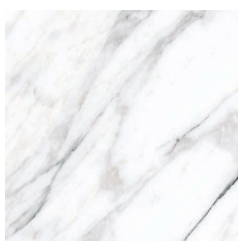
PIERO



A refined selection of rare and original marbles in porcelain stoneware. Piero consists of four marble variants in both traditional and large sizes: Calacatta Macchia Antica, Calacatta Green, Irish Green and Verde Alpi, plus one granite colour. Piero is EPD verified.



V2 - Moderate Shade Variation



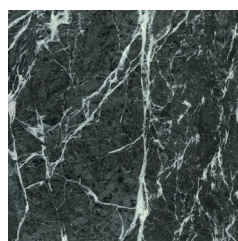
TTBA48674



TTBA48675



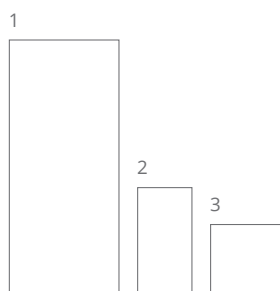
TTBA48676



TTBA48677



TTBA48678



	SIZES (mm)	> <	FINISHES	TTBA48674	TTBA48675	TTBA48676	TTBA48677	TTBA48678
1	1200x2800	6mm	MATT (R10)	POL				
2	600x1200	10mm	MATT (R10)	POL				
3	800x800	10mm	MATT (R10)	-				

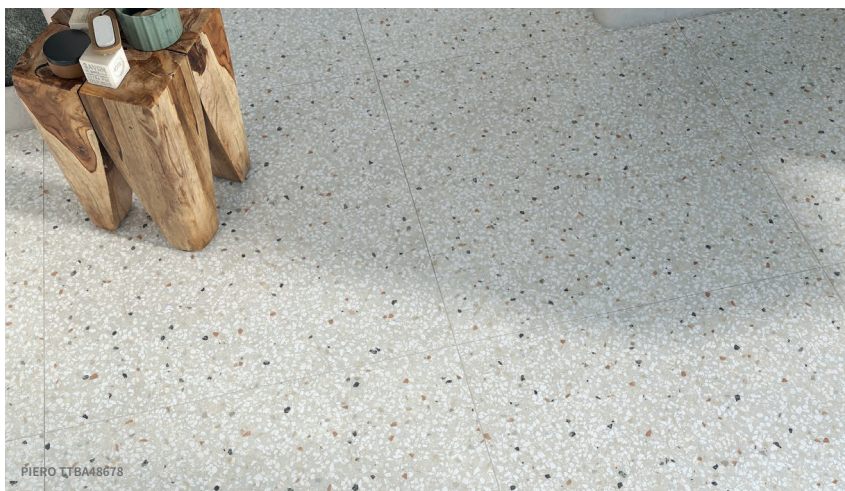
LRV and PTV values can vary batch to batch, please contact for advice.

Swatch colours may vary, samples should be requested.

Find us on:



www.grestec.co.uk | T: +44 (0)345 130 2241 | E: sales@grestec.co.uk



LONDON STUDIOS

Grestec has its own Tile Studios in London where architects and designers can visit to discover the latest tile ranges and concepts.

Full of new and existing collections suitable for all situations; commercial, retail and residential. Our studio spaces are an excellent environment for ideas, solutions and project discussions, with plentiful samples to take away immediately or simply order for next day delivery. Further details can be found on our website.

STUDIO 329 (APPOINTMENT ONLY)
Business Design Centre, 52 Upper Street,
Islington, London, N1 0QH

POP-UP STUDIO (UNMANNED/ WALK-INS)
The Building Centre, 26 Store Street,
London, WC1E 7BT



TECHNICAL DATA SHEET - ISO 10545 AVERAGE VALUES

2	Dimension and surface quality	Conforms	12	Frost resistance	Resistant
3	Water absorption	Conforms	13	Chemical resistance	From ULA to ULB
4	Modulus of rupture	Conforms	14	Stain resistance	Class 5
6	Resistance to deep abrasion	<150 mm ³		Slip resistance DIN 51130	NAT R10
8	Linear thermal expansion	≤9MK ⁻¹			
9	Thermal shock resistance	Resistant			

SUSTAINABILITY INFORMATION



CLEANING + MAINTENANCE ADVICE

INITIAL WASHING

The initial washing is fundamental for good treatment results. The initial washing is aimed at removing any laying residues and building grime.

Product: Deterdek

ROUTINE MAINTENANCE

The aim of the routine maintenance is to remove dirt and scuff marks. Must be carried out regularly.

Product: FilaCleaner

SPECIAL MAINTENANCE

Special maintenance is carried out in case of very stubborn dirt, when the routine maintenance is not enough to restore the original look of the surface.

Product: Fila PS/87

Please see www.filasolutions.com for methods of use, dilution and coverage.

