

Material: **Porcelain** | Appearance: **Stone effect** | Application: **Walls and Floors**

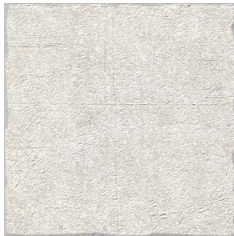
5 Colours
2 Finishes
14 Tile sizes

Grond Two

Grond Two porcelain tiles boast earthy clay shades, captivating textures and rustic tumbled edges. These versatile tiles are suitable for both indoor and outdoor applications, ensuring a seamless transition.



Shade variation: V3 - High



KAAB49408



KAAB49409



KAAB49410



KAAB49411



KAAB49412



KAAB49412



LRV and PTV values can vary batch to batch, please contact for advice.
Switch colours may vary, samples should be requested.

www.grestec.co.uk | T: 0345 130 2241 | E: sales@grestec.co.uk

Find us on:



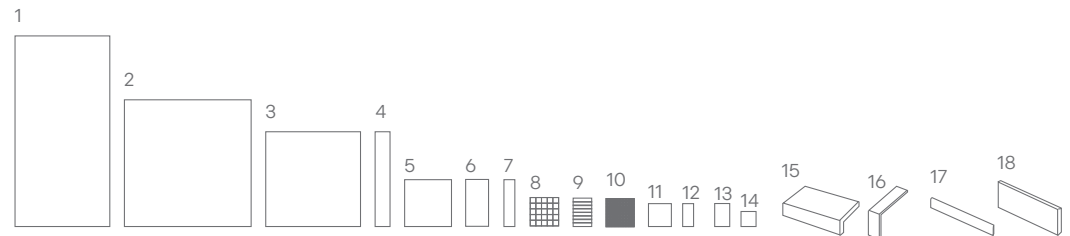
Grond Two



KAAB49409

Formats

	Sizes (mm)	> <		Finishes
1	600x1200	20mm	-	THK (R11/C) / ≥36 PTV
2	800x800	20mm	-	THK (R11/C) / ≥36 PTV
3	600x600	20mm	-	THK (R11/C) / ≥36 PTV
4	100x600	10mm	NAT (R10) / ≥36 PTV	-
5	300x300	10mm	NAT (R10) / ≥36 PTV	-
6	150x300	10mm	NAT (R10) / ≥36 PTV	-
7	75x300	10mm	NAT (R10) / ≥36 PTV	-
8	75x75 MOS on 300x300 MESH	10mm	NAT (R10) / ≥36 PTV	-
9	32x200 MOS on 200x300 MES	10mm	NAT (R10) / ≥36 PTV	-
10	15x15 MOS on 300x300 MESH	10mm	NAT (R10) / ≥36 PTV	-
11	150x150	10mm	NAT (R10) / ≥36 PTV	-
12	75x150	10mm	NAT (R10) / ≥36 PTV	-
13	202x304	20mm	-	THK (R11/C) / ≥36 PTV
14	202x202	20mm	-	THK (R11/C) / ≥36 PTV
15	300x150x75 EL	10mm	NAT (R10) / ≥36 PTV	-
16	75x300 EL	10mm	NAT (R10) / ≥36 PTV	-
17	46x600 SK1	10mm	NAT (R10) / ≥36 PTV	-
18	300x600 SK2	20mm	-	THK (R11/C) / ≥36 PTV



*10mm thick material have an irregular tumbled edge, therefore it is recommended to install with a 10mm joint
 *20mm thick material are straight edge



Grond Two



Above
Floor: KAAB49410

Right
Wall: KAAB49411



Above
Wall: KAAB49408

LRV and PTV values can vary batch to batch, please contact for advice.
Swatch colours may vary, samples should be requested.



Grond Two

Technical data sheet - ISO 10545 average values

2	Sizes	Conforms
3	Water absorption	E <= 0,04 %
4	Flexural strength Breaking strength	50 N/mm2 3200 N
6	Resistance to deep abrasion	<132 mm³
8	Linear thermal expansion	a=7x10-6/°C-1
9	Thermal shock resistance	Resistant
12	Frost resistance	Resistant
13	Chemical resistance	Unaffected
14	Stain resistance	Class 5
	Slip resistance	NAT R10 THK R11/C ≥36 PTV

Sustainability information



Cleaning and maintenance advice

Initial washing

The initial washing is fundamental for good treatment results. The initial washing is aimed at removing any laying residues and building grime.
Product: Deterdek Pro

Routine maintenance

The aim of the routine maintenance is to remove dirt and scuff marks. Must be carried out regularly.
Product: Cleaner Pro

Special maintenance

Special maintenance is carried out in case of very stubborn dirt, when the routine maintenance is not enough to restore the original look of the surface.
Product: PS/87 Pro

Please see www.filasolutions.com for methods of use, dilution and coverage.