

Material: **Unglazed porcelain** | Appearance: **Uniform** | Application: **Walls and floors**

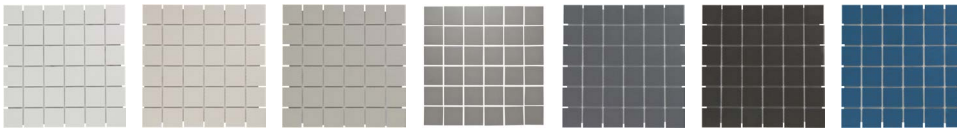
10  
Colours

1  
Finish

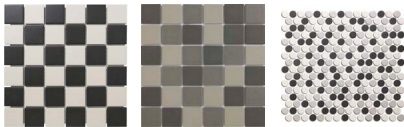
4  
Tile sizes

# Mattonella

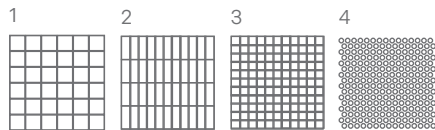
Unglazed porcelain mosaic suitable for both wall and floor applications.



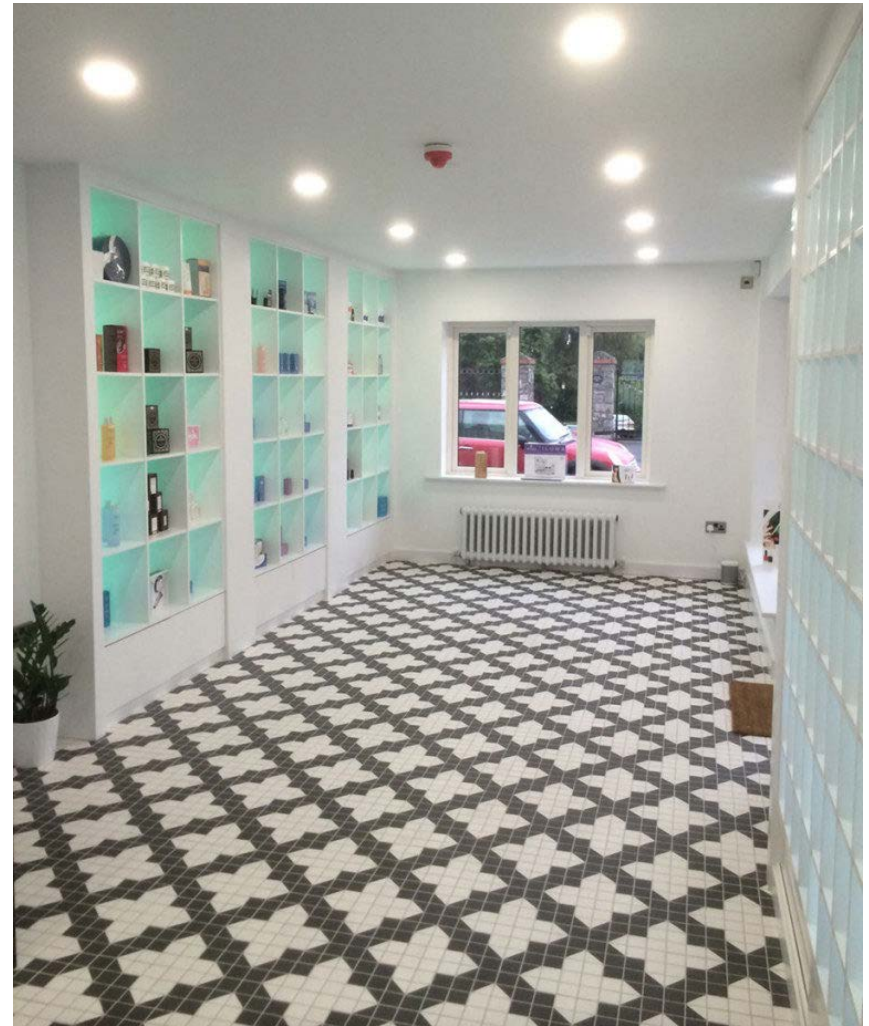
BHP47519 BHP47520 BHP47521 BHP47522 BHP47523 BHP47524 BHP47526



BHP47532 BHP47533 BHP47534



	Sizes (mm)	>  <	Finishes	BHP47519	BHP47520	BHP47521	BHP47522	BHP47523	BHP47524	BHP47526	BHP47532	BHP47533	BHP47534
1	48x48 309x309 MESH	6mm	STR (R11/C)	■	■	■	■	■	■	■	■	■	■
2	23x73 300x300 MESH	6mm	STR (R11/C)	■	■	■	■	■	■	■	■	■	■
3	23x23 on 300x300 MESH	6mm	STR (R11/C)	■	■	■	■	■	■	■	■	■	■
4	PEN 19 DIA on 315x294 MESH	6mm	STR (R11)	■	■	■	■	■	■	■	■	■	■



LRV and PTV values can vary batch to batch, please contact for advice.  
 Swatch colours may vary, samples should be requested.

www.grestec.co.uk | T: 0345 130 2241 | E: sales@grestec.co.uk

Find us on:



# Mattonella

## Technical data sheet - ISO 10545 average values

3	Water absorption	<0.11%
4	Breaking strength Modulus of rupture	>869 N/MM2 56.8N
9	Resistance to sudden temperature changes	<b>Resistant</b>
12	Frost resistance	<b>Resistant</b>
13	Chemical resistance	<b>A - LA - HA</b>
14	Stain resistance	<b>Class 5</b>
	Slip resistance	<b>Nat R11/C</b>

## Sustainability information



### Cleaning and maintenance advice

#### Initial washing

The initial washing is fundamental for good treatment results. The initial washing is aimed at removing any laying residues and building grime.

Product: Deterdek Pro

#### Routine maintenance

The aim of the routine maintenance is to remove dirt and scuff marks. Must be carried out regularly.

Product: Cleaner Pro

#### Special maintenance

Special maintenance is carried out in case of very stubborn dirt, when the routine maintenance is not enough to restore the original look of the surface.

Product: PS/87 Pro

Please see [www.filasolutions.com](http://www.filasolutions.com) for methods of use, dilution and coverage.