

Material: **Ceramic** | Appearance: **Industrial** | Application: **Walls**

10 Colours 3 Finishes 1 Tile size

Tipton

Tipton comprises of five metallic colours and five matt and gloss colours – white, grey, black, blue, green and beige. The elegant majolica matt and gloss finishes can be combined for unusual and striking interior designs. The metallic effect generates interplays of light and shadow, ideal for defining modern interiors. Tipton is suitable for wall applications.



Shade variation: V3 High



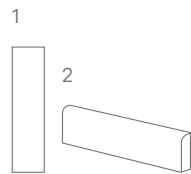
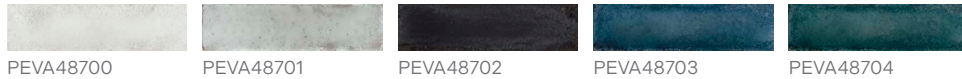
Matt



Gloss



Metallic



	Sizes (mm)	> <	Finishes		
1	60x240	9.5mm	Matt	Gloss	Metallic
2	60x240 SK	9.5mm	Matt	Gloss	Metallic



LRV and PTV values can vary batch to batch, please contact for advice. Swatch colours may vary, samples should be requested.

www.grestec.co.uk | T: 0345 130 2241 | E: sales@grestec.co.uk

Find us on:



Tipton





Tipton

Technical data sheet - ISO 10545 average values

3	Water absorption	Conforms
4	Breaking strength Modulus of rupture	2000 N >45N/mm²
11	Glaze crazing resistance	Resistant
12	Frost resistance	Conforms
13	Chemical resistance	A - LA - HA
14	Stain resistance	Class 5
	Shade variation	V3 high shade variation

Sustainability information



Cleaning and maintenance advice

Initial washing

The initial washing is fundamental for good treatment results. The initial washing is aimed at removing any laying residues and building grime.
Product: Cloth

Routine maintenance

The aim of the routine maintenance is to remove dirt and scuff marks. Must be carried out regularly.
Product: Cleaner Pro

Special maintenance

Special maintenance is carried out in case of very stubborn dirt, when the routine maintenance is not enough to restore the original look of the surface.
Product: PS/87 Pro

Please see www.filasolutions.com for methods of use, dilution and coverage.