

Material: **Porcelain** | Appearance: **Uniform** | Application: **Walls**

1
Colour

2
Finishes

10
Tile size

Hampton

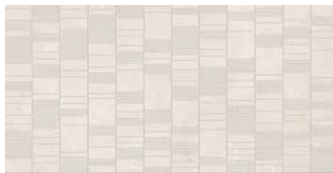
These contemporary porcelain stone tiles from our the Hampton range deliver sophistication and modernicity to any architectural setting. Available in one neutral shade, which offers the texture and shade variation of natural limestone. There are eleven size options, including two mosaic formats and a decorative format, ideal for feature areas.



Shade variation: V2 - moderate

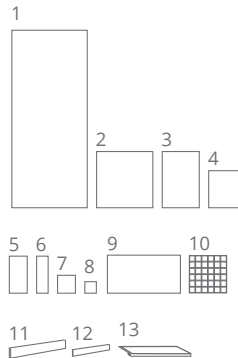


TMLH48650



TMLH48650DEC
300x600

	Sizes (mm)	> <	Finishes	
1	1200x2800	6mm	BRU (R10)	-
2	900x900	10mm	BRU (R10)	NAT (R11)
3	600x900	10mm	BRU (R10)	-
4	600x600	10mm	BRU (R10)	-
5	300x600	10mm	BRU (R10)	-
6	200x600	10mm	BRU (R10)	-
7	300x300	10mm	BRU (R10)	-
8	200x200	10mm	BRU (R10)	-
9	300x600 DEC	10mm	BRU (R10)	-
10	50x50x MOS on 300x300 MESH	10mm	BRU (R10)	NAT (R11)
11	70x900 SK	10mm	BRU (R10)	-
12	70x600 SK	10mm	BRU (R10)	-
13	340x900 ST	10mm	BRU (R10)	-



LRV and PTV values can vary batch to batch, please contact for advice. Swatch colours may vary, samples should be requested.

www.grestec.co.uk | T: 0345 130 2241 | E: sales@grestec.co.uk

Find us on:

Material: **Porcelain** | Appearance: **Uniform** | Application: **Walls**



Hampton



Above
Floor: TMLH48650

Right
Floor: TMLH48650



Above
Floor: TMLH48650
Wall: TMLH48650DEC

LRV and PTV values can vary batch to batch, please contact for advice.
Swatch colours may vary, samples should be requested.

www.grestec.co.uk | T: 0345 130 2241 | E: sales@grestec.co.uk

Find us on:    



Hampton

Technical data sheet - ISO 10545 average values

2	Sizes	Conforms
3	Water absorption	Conforms
4	Bending strength	Conforms
6	Resistance to deep abrasion	150 mm ³
8	Linear thermal expansion	9 MK-1
9	Thermal shock resistance	Resistant
12	Frost resistance	Frost-proof
13	Chemical resistance	ULA to ULB
14	Stain resistance	Class 5
	Slip resistance	NAT R11 BRU R10

Sustainability information



Cleaning and maintenance advice

Initial washing

The initial washing is fundamental for good treatment results. The initial washing is aimed at removing any laying residues and building grime.

Product: Deterdek Pro

Routine maintenance

The aim of the routine maintenance is to remove dirt and scuff marks. Must be carried out regularly.

Product: Cleaner Pro

Special maintenance

Special maintenance is carried out in case of very stubborn dirt, when the routine maintenance is not enough to restore the original look of the surface.

Product: PS/87 Pro

Please see www.filasolutions.com for methods of use, dilution and coverage.