

Material: **Porcelain** | Appearance: **Cement effect** | Application: **Walls and Floors**

Aggrestone

Aggrestone features a blend of granite and limestone effects. Available in four cool and warm neutral concrete shades, suitable for both internal and external applications



Shade variation: V3 high



10mm thick



PEAE42324



PEAE42325



PEAE42326



PEAE42327

20mm thick

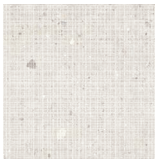


PEAE42325THK*

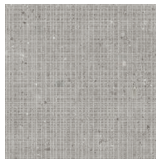


PEAE42327THK*

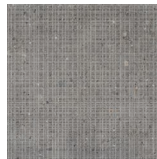
Decors- 600x1200, 200x1200 + 300x600mm



PEAE42324DEC



PEAE42325DEC



PEAE42326DEC



PEAE42327DEC



LRV and PTV values can vary batch to batch, please contact for advice.
Switch colours may vary, samples should be requested.



Aggrestone PEAE42326

www.grestec.co.uk | T: 0345 130 2241 | E: sales@grestec.co.uk

Find us on:

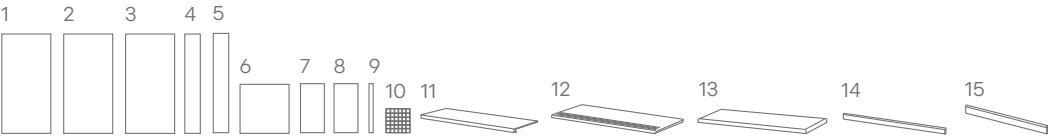


Aggrestone



Formats

Sizes (mm)		> <	Finishes		
1	600x1200	9.5mm	NAT (R10/B)	AS (R11/C)	-
2	600x1200 DEC	9.5mm	NAT (R10/B)	-	-
3	600x1200 THK	20mm	-	-	THK (R11/C)
4	200x1200	9.5mm	NAT (R10/B)	-	-
5	200x1200 DEC	9.5mm	NAT (R10/B)	-	-
6	600x600	9.5mm	NAT (R10/B)	-	-
7	300x600	9.5mm	NAT (R10/B)	-	-
8	300x600 DEC	9.5mm	NAT (R10/B)	-	-
9	65x600	9.5mm	NAT (R10/B)	-	-
10	50x50 MOS on 300x300 MESH	9.5mm	NAT (R10/B)	-	-
11	STT2 330x1200x32	9.5mm	NAT (R10/B)	-	-
12	STT1 330x1200	9.5mm	NAT (R10/B)	-	-
13	CORNER TILE 330x1200x32x32	9.5mm	NAT (R10/B)	-	-
14	SK 46x1200	9.5mm	NAT (R10/B)	-	-
15	SK 70x600	9.5mm	NAT (R10/B)	-	-



* 600x1200 thick only available in ERE42325THK + ERE42327THK

Material: **Porcelain** | Appearance: **Cement effect** | Application: **Walls and Floors**



Aggrestone



Above
Wall: PEAE42324 PEAE42324DEC
Floor: PEAE42324

Right
Floor: PEAE42325



Above
Wall: PEAE42326
Floor: PEAE42326

LRV and PTV values can vary batch to batch, please contact for advice.
Swatch colours may vary, samples should be requested.

www.grestec.co.uk | T: 0345 130 2241 | E: sales@grestec.co.uk

Find us on:    



Aggrestone

Technical data sheet - ISO 10545 average values

3	Water absorption	Conforms
4	Breaking strength	10mm: ≥ 2000 N 20mm ≥ 12000 N
4	Modulus of rupture	$>45\text{N/mm}^2$
12	Frost resistance	Conforms
13	Chemical resistance	A - LA - HA
14	Stain resistance	Class 5
	Slip resistance	NAT R10/B AS R11/C THK R11/C

Sustainability information



Cleaning and maintenance advice

Initial washing

The initial washing is fundamental for good treatment results. The initial washing is aimed at removing any laying residues and building grime.

Product: Deterdek Pro

Routine maintenance

The aim of the routine maintenance is to remove dirt and scuff marks. Must be carried out regularly.

Product: Cleaner Pro

Special maintenance

Special maintenance is carried out in case of very stubborn dirt, when the routine maintenance is not enough to restore the original look of the surface.

Product: PS/87 Pro

Please see www.filasolutions.com for methods of use, dilution and coverage.