

# KAKAM

- Neutral colours
- Mosaics supplied on mesh sheet
- Suitable for internal wall applications

8  
COLOURS

1  
FINISH

5  
TILE SIZES

www.grestec.co.uk | T: 0345 130 2241 | E: sales@grestec.co.uk



IPP45033-BRICK



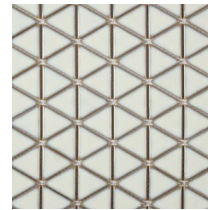
IPP45040-BRICK



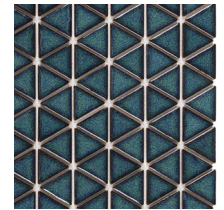
IPP45043-BRICK



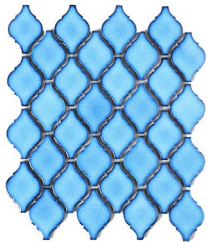
IPP45062-T2



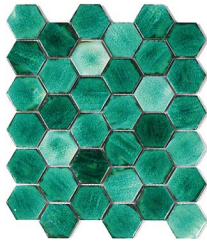
IPP45060-T1



IPP45061-T1

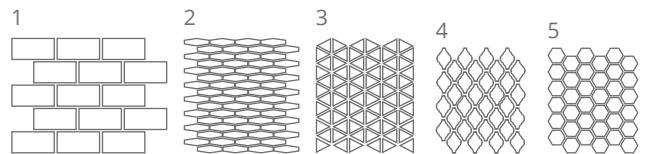


IPP7994-T3



IPP7899-T4

	SIZES (MM)	>  <	FINISHES
1	BRICK - 50x100 on 265x309	6mm	GLOSS
2	T2 - 19x73 HEX MOS on 298x298	6mm	GLOSS
3	T1 - 37x42 TRI MOS on 260x300	6mm	GLOSS
4	T3- 47x66 ARA on 249x282	6mm	GLOSS
5	T4- 47x66 HEX on 249x282	6mm	GLOSS



SWATCH COLOURS MAY VARY, SAMPLES SHOULD BE REQUESTED. FIND US ON:    



## CLEANING + MAINTENANCE ADVICE

### INITIAL WASHING

The initial washing is fundamental for good treatment results. The initial washing is aimed at removing any laying residues and building grime.

---

Equipment	Cloth
Procedure	<ul style="list-style-type: none"><li>• Clean off cement stains from grouting and other building work, which once hardened, will not be removed during any normal cleaning procedure.</li><li>• Clean wall tiling with a dry cloth when joints are hard.</li></ul>

---

### ROUTINE MAINTENANCE

The aim of the routine maintenance is to remove dirt and scuff marks. Must be carried out regularly.

---

Product	Filacleaner (Diluted 1:50 in warm water)
Equipment	Cloth
Procedure	<ul style="list-style-type: none"><li>• Remove dust with a dry cloth</li><li>• Wash with FilaCleaner using a cloth that should be soaked often in the solution and wrung out well</li></ul>

---