

# Nave Colour

- Cool and warm tones
- Suitable for wall + floor applications
- Geometric style

8  
COLOURS

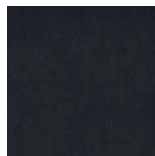
1  
FINISH

10  
TILE SIZES

GRESTEC.CO.UK / 0345 130 2241



PGY33466  
LRV: 71



PGY33467  
LRV: 7



PGY33468  
LRV: 34



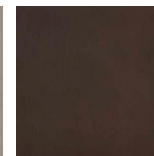
PGY33469  
LRV: 32



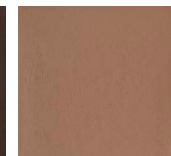
PGY33470  
LRV: 53



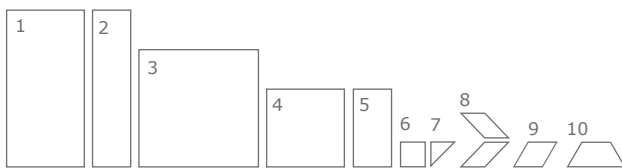
PGY33471  
LRV: 33



PGY33472  
LRV: 10



PGY33473  
LRV: 27



	SIZES (MM)	THICKNESS	FINISHES	PGY33466	PGY33467	PGY33468	PGY33469	PGY33470	PGY33471	PGY33472	PGY33473
1	600x1200	6MM	NAT (R9) / PTV M ●	■	■	■	■	■	■	■	■
2	300x1200	6MM	NAT (R9) / PTV M ●	■							
3	1000x1000	6MM	NAT (R9) / PTV M ●	■	■	■	■	■	■	■	■
4	600x600	6MM	NAT (R9) / PTV M ●	■	■	■	■	■	■	■	■
5	300x600	6MM	NAT (R9) / PTV M ●	■	■	■	■	■	■	■	■
6	200x200	6MM	NAT (R9) / PTV M ●	■	■	■	■	■	■	■	■
7	196x196x278 TRI	6MM	NAT (R9) / PTV M ●	■	■	■	■	■	■	■	■
8	198x197 RHOM L + R	6MM	NAT (R9) / PTV M ●	■	■	■	■	■	■	■	■
9	197x228 RHOM	6MM	NAT (R9) / PTV M ●	■	■	■	■	■	■	■	■
10	228x228x456 TRAP	6MM	NAT (R9) / PTV M ●	■	■	■	■	■	■	■	■

PTV + LRV VALUES VARY BATCH TO BATCH PLEASE CONTACT FOR ADVICE. PRINT COLOURS MAY VARY, PLEASE REQUEST SAMPLES.

FIND US ON:    



**TECHNICAL SPECIFICATION**

TECHNICAL CHARACTERISTIC	STANDARD	AVERAGE VALUES
Water absorption	ISO 10545-3	<0.05%
Sizes	ISO 10545-2	Length and width: 0.2% Thickness: 5% Linearity: 0.2% Wedging: 0.2% Warpage: 0.2%
Bending strength	ISO 10545-4	>42N/mm <sup>2</sup>
Deep abrasion resistance	ISO 10545-6	140 mm <sup>3</sup>
Coefficient of linear thermal expansion	ISO 10545-8	7MK <sup>-1</sup>
Resistance to thermal shock	ISO 10545-9	Resistant
Frost resistance	ISO 10545-12	Frost proof
Resistance to chemical products	ISO 10545-13	Unaffected
Resistance to light	DIN 51094	No change in brightness or colour
Stain resistance	ISO 10545-14	Class 5
PTV results	-	PTV M ● (Moderate slip potential)
Slip resistance (Shod)	DIN 51130	R9

**CLEANING + MAINTENANCE ADVICE****INITIAL WASHING**

The initial washing is fundamental for good treatment results. The initial washing is aimed at removing any laying residues and building grime.

Product	Deterdek (1:5 diluted in water)
Coverage	Deterdek (5 l per 100m <sup>2</sup> )
Equipment	Single-disc professional cleaner, liquid vacuum cleaner and cloth
Procedure	<ul style="list-style-type: none"> <li>• After the floor is swept and soaked with water, spread the diluted Deterdek onto the floor.</li> <li>• Then scour with single-disc professional cleaner</li> <li>• Vacuum the residue, rinse the floor well and then mop with a liquid vacuum cleaner or a cloth.</li> </ul>

**ROUTINE MAINTENANCE**

The aim of the routine maintenance is to remove dirt and scuff marks. Must be carried out regularly.

Product	Filacleaner (Diluted 1:50 in warm water)
Equipment	Cloth or mop (For large areas the use of a cleaning machine is recommended)
Procedure	<ul style="list-style-type: none"> <li>• Dilute Filacleaner in warm water</li> <li>• Wipe a cloth wet with the solution over the floor</li> <li>• Rinse the floor in case of concentrated solutions of Filacleaner</li> </ul>

**SPECIAL MAINTENANCE**

Special maintenance is carried out in case of very stubborn dirt, when the routine maintenance is not enough to restore the original look of the surface.

Product	Fila PS/87 (1:5 diluted in water)
Coverage	5 l per 100m <sup>2</sup> (when diluted 1:5)
Procedure	<ul style="list-style-type: none"> <li>• Dilute Fila PS/87 in 1:5 in water</li> <li>• Apply to the floor previously soaked with water and leave for a few minutes</li> <li>• Scrub with a single disc professional cleaner</li> <li>• Mop up residue with a liquid vacuum cleaner or cloth</li> </ul>

FIND US ON:

