

WALDEN



Walden presents a vast range of colours which provides high versatility, enhanced by a subtle convex surface. Elegant tonalities make Walden a poetic, contemporary collection: tones of beige, grey, green are supplemented by the vintage tones of metallised gold, bronze and steel. EPD verified and contains 69% recycled material.



V2 - Moderate shade variation



QTJ39180



QTJ39181



QTJ39182



QTJ39183



QTJ39184



QTJ39185



QTJ39192



QTJ39193



QTJ39194



QTJ39195



QTJ39196

METALLIC EFFECT



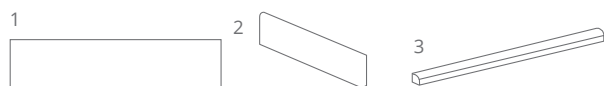
QTJ39191



QTJ39190



QTJ39189



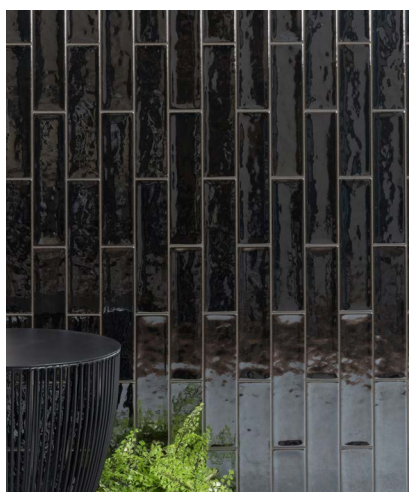
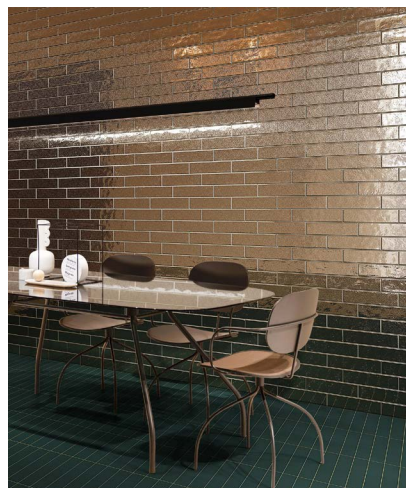
| | SIZE (mm) | > < | FINISHES |
|---|-----------------|------|----------|
| 1 | 65x266 | 10mm | GLOSS |
| 2 | 65x266 BULLNOSE | 10mm | GLOSS |
| 3 | 12x266 JOLLY | 10mm | GLOSS |

LRV and PTV values can vary batch to batch, please contact for advice.
Swatch colours may vary, samples should be requested.

Find us on:



www.grestec.co.uk | T: +44 (0)345 130 2241 | E: sales@grestec.co.uk



LONDON STUDIOS

Grestec has its own Tile Studios in London where architects and designers can visit to discover the latest tile ranges and concepts.

Full of new and existing collections suitable for all situations; commercial, retail and residential. Our studio spaces are an excellent environment for ideas, solutions and project discussions, with plentiful samples to take away immediately or simply order for next day delivery. Further details can be found on our website.

STUDIO 329 (APPOINTMENT ONLY)
Business Design Centre, 52 Upper Street,
Islington, London, N1 0QH

POP-UP STUDIO (UNMANNED/ WALK-INS)
The Building Centre, 26 Store Street,
London, WC1E 7BT



TECHNICAL DATA SHEET - ISO 10545 AVERAGE VALUES

| | | | | | |
|---|-------------------------------|-----------|----|---------------------|-----------|
| 2 | Dimension and surface quality | Conforms | 11 | Crazing resistance | Resistant |
| 3 | Water absorption | Conforms | 13 | Chemical resistance | Resistant |
| 4 | Bending strength | Conforms | 14 | Stain resistance | Class 5 |
| 9 | Thermal shock resistance | Resistant | | | |

SUSTAINABILITY INFORMATION



IMPORTANT INFORMATION - METALLIC EFFECT

The special metallic glaze of these tiles is particularly acid-sensitive therefore we recommend before grouting to apply a sealer on the tiles (e.g. Fila MP90) and wait to 1 or 2 days for setting up the possible 'crackle effect'.

Anti-limescale products should not be used for ordinary maintenance. We recommend to use a natural cleaner such as Fila Cleaner.

Do not use aggressive cleaning products such as bleach or ammonia.

Complaints due to a laying or fixing mistakes will not be accepted.

CLEANING + MAINTENANCE ADVICE

INITIAL WASHING

The initial washing is fundamental for good treatment results. The initial washing is aimed at removing any laying residues and building grime.

Equipment: Cloth

ROUTINE MAINTENANCE

The aim of the routine maintenance is to remove dirt and scuff marks. Must be carried out regularly.

Product: FilaCleaner

Please see www.filasolutions.com for methods of use, dilution and coverage.

