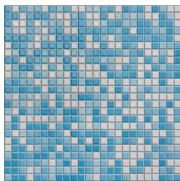


# WELLNESS

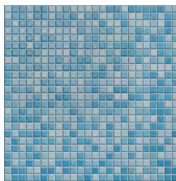
- Suitable for swimming pool walls
- Also suitable for pool floors where the water level exceeds 80cm only
- 12x12mm mosaics



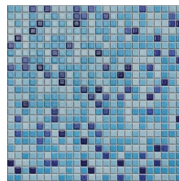
[www.grestec.co.uk](http://www.grestec.co.uk) / T: 0345 130 2241



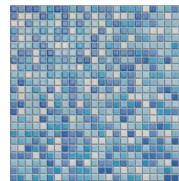
ANW32700



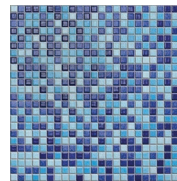
ANW32702



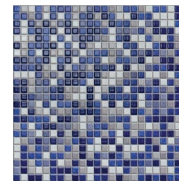
ANW32704



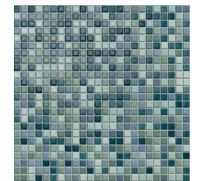
ANW32708



ANW32706

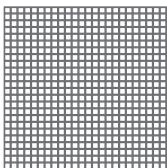


ANW32710



ANW32714

1



	SIZE (mm)	>  <	FINISH
1	12x12 MOS on 300x300 MESH	7.2mm	GLOSS

REQUEST SAMPLES, PRINT COLOURS MAY VARY. FIND US ON:



## TECHNICAL SPECIFICATION

TECHNICAL CHARACTERISTIC	STANDARD	AVERAGE VALUES
Water absorption	ISO 10545-3	<2.5%
Sizes	ISO 10545-2	Conforms
Bending strength	ISO 10545-4	>39N/mm <sup>2</sup>
Coefficient of linear thermal expansion	ISO 10545-8	Conforms
Frost resistance	ISO 10545-12	Conforms
Resistance to chemical products	ISO 10545-13	Conforms
Colour to light resistance	DIN 51094	Conforms

## CLEANING + MAINTENANCE ADVICE

### INITIAL WASHING

The initial washing is fundamental for good treatment results. The initial washing is aimed at removing any laying residues and building grime.

Product	Filacleaner (Diluted 1:10 in warm water)
Equipment	Cloth
Procedure	<ul style="list-style-type: none"> <li>• Clean off cement stains from grouting and other building work, which once hardened, will not be removed during any normal cleaning procedure.</li> <li>• Clean off wall tiling with a dry cloth when joints are hard.</li> </ul>

### ROUTINE MAINTENANCE

The aim of the routine maintenance is to remove dirt and scuff marks. Must be carried out regularly.

Product	Filacleaner (Diluted 1:5 in warm water)
Equipment	Cloth
Procedure	<ul style="list-style-type: none"> <li>• Remove dust with a dry cloth</li> <li>• Dilute Filacleaner in warm water</li> <li>• Regularly soak cloth wet with the solution and wring out well before covering tiles.</li> </ul>