

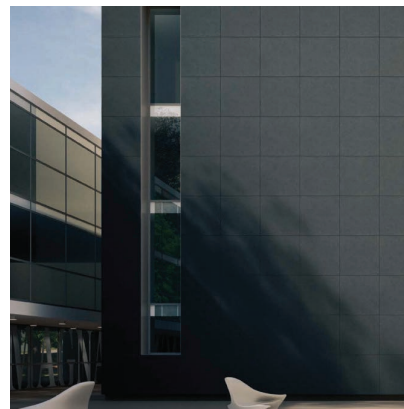
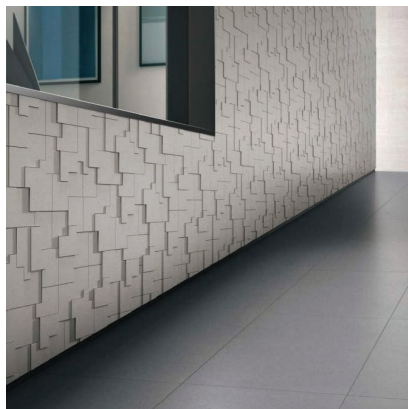
# EXOSPHERE XXL



Six neutral shades available in six modular formats. Exosphere is ideal for architectural spaces, both indoor and outdoor applications.



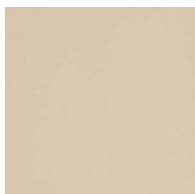
V1 monochromatic



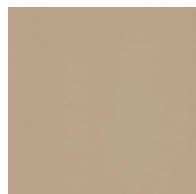
LDL2970  
LRV: 74



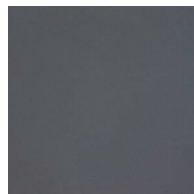
LDL2982  
LRV: 60



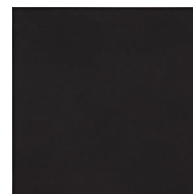
LDL2980  
LRV: 44



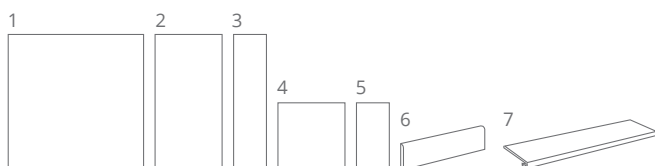
LDL2981  
LRV: 34



LDL2975  
LRV: 15



LDL2976  
LRV: 10



	SIZE (mm)	>  <	FINISHES	
1	1200x1200	10.5mm	NAT (R10)	LAP
2	600x1200	10.5mm	NAT (R10)	LAP
4	600x600	10.5mm	NAT (R10)	LAP
5	300x600	10.5mm	NAT (R10)	-
6	95x600 SK	10.5mm	NAT (R10)	LAP
7	325x1200 ST	10.5mm	NAT (R10)	-

LRV and PTV values can vary batch to batch, please contact for advice.  
Swatch colours may vary, samples should be requested.

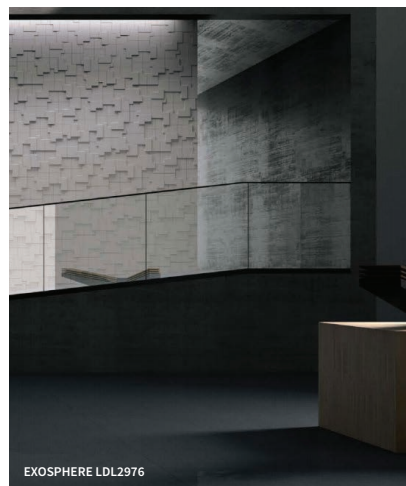
Find us on:



www.grestec.co.uk | T: +44 (0)345 130 2241 | E: sales@grestec.co.uk



EXOSPHERE LDL2974



EXOSPHERE LDL2976



EXOSPHERE LDL2976LAP



EXOSPHERE XXL LDL2980



EXOSPHERE XXL LDL2980



EXOSPHERE XXL LDL2980

## LONDON STUDIOS

Grestec has its own Tile Studios in London where architects and designers can visit to discover the latest tile ranges and concepts.

Full of new and existing collections suitable for all situations; commercial, retail and residential. Our studio spaces are an excellent environment for ideas, solutions and project discussions, with plentiful samples to take away immediately or simply order for next day delivery. Further details can be found on our website.

**STUDIO 329 (APPOINTMENT ONLY)**  
Business Design Centre, 52 Upper Street,  
Islington, London, N1 0QH

**POP-UP STUDIO (UNMANNED/ WALK-INS)**  
The Building Centre, 26 Store Street,  
London, WC1E 7BT



## TECHNICAL DATA SHEET - ISO 10545 AVERAGE VALUES

2	Sizes	± 0.3 % Length + width ± 4 % Thickness ± 0.5 % Straightness of edges ± 0.3 % Wedging ± 0.3 % Warpage	9	Resistance to thermal shock	Resistant
3	Water absorption	0,05%	12	Frost resistance	Frost proof
4	Flexural resistance	50 N/mm <sup>2</sup>	13	Chemical resistance	Min. UB
6	Resistance to deep abrasion	≤ 140 mm <sup>3</sup>	14	Stain resistance	Class 3
8	Coefficient of linear thermal expansion	7x10 <sup>-6</sup> °C <sup>-1</sup>		Slip resistance DN 51130/ DN 51097	Natural (NAT): R10

## SUSTAINABILITY INFORMATION



## CLEANING + MAINTENANCE ADVICE

## INITIAL WASHING

The initial washing is fundamental for good treatment results. The initial washing is aimed at removing any laying residues and building grime.

**Product: Deterdek**

## ROUTINE MAINTENANCE

The aim of the routine maintenance is to remove dirt and scuff marks. Must be carried out regularly.

**Product: Cleaner Pro**

## SPECIAL MAINTENANCE

Special maintenance is carried out in case of very stubborn dirt, when the routine maintenance is not enough to restore the original look of the surface.

**Product: Fila PS/87**

*Please see [www.filasolutions.com](http://www.filasolutions.com) for methods of use, dilution and coverage.*

