

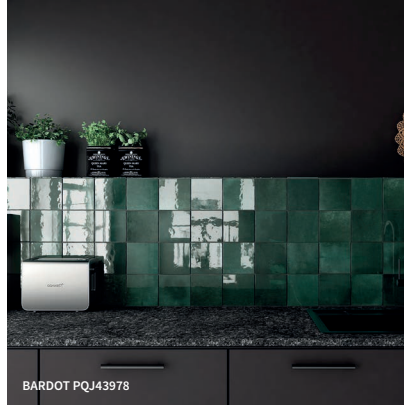
BARDOT

20
COLOURS2
FINISHES2
TILE SIZES

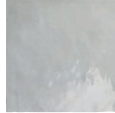
A handcrafted style signals a broad shift away from clean, minimal surfaces, to embrace the 'perfect imperfection' interior trend. The unique, tactile qualities of each tile in our Bardot ceramic tile range create a stunning, modern artisan feel in interiors.



V4 extreme shade variation



GLOSS

PQJ43975
LRV: 68PQJ43976
LRV: 33PQJ43977
LRV: 2PQJ43978
LRV: 4PQJ43979
LRV: 9PQJ43980
LRV: 47PQJ43981
LRV: 20PQJ43982
LRV: 7PQJ43983
LRV: 24PQJ43984
LRV: 35

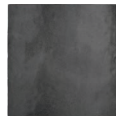
MATT



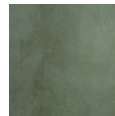
PQJ45800



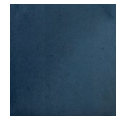
PQJ45801



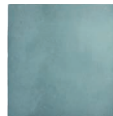
PQJ45802



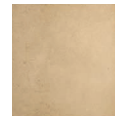
PQJ45803



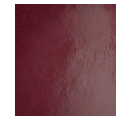
PQJ45804



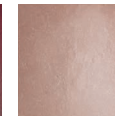
PQJ45805



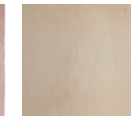
PQJ45806



PQJ45807



PQJ45808



PQJ45809

1



2



3



4



5



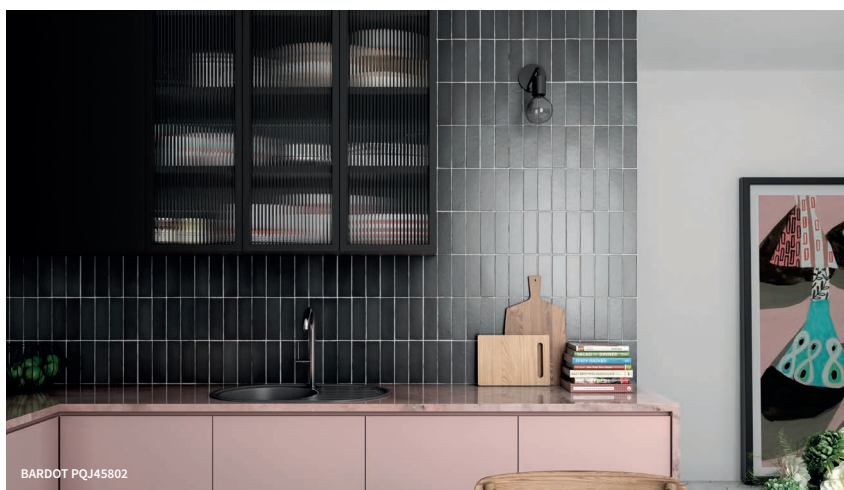
	SIZES (mm)	> <	FINISHES	
1	65x200	9mm	GLOSS	MATT
2	132x132	9mm	GLOSS	MATT
3	65x200 BULLNOSE	9mm	GLOSS	MATT
4	30x200 PENCIL BULLNOSE	9mm	GLOSS	MATT
5	12x200 JOLLY	9mm	GLOSS	MATT

LRV and PTV values can vary batch to batch, please contact for advice.
Swatch colours may vary, samples should be requested.

Find us on:



www.grestec.co.uk | T: +44 (0)345 130 2241 | E: sales@grestec.co.uk



LONDON STUDIOS

Grestec has its own Tile Studios in London where architects and designers can visit to discover the latest tile ranges and concepts.

Full of new and existing collections suitable for all situations; commercial, retail and residential. Our studio spaces are an excellent environment for ideas, solutions and project discussions, with plentiful samples to take away immediately or simply order for next day delivery. Further details can be found on our website.

STUDIO 329 (APPOINTMENT ONLY)
Business Design Centre, 52 Upper Street,
Islington, London, N1 0QH

POP-UP STUDIO (UNMANNED/ WALK-INS)
The Building Centre, 26 Store Street,
London, WC1E 7BT



TECHNICAL DATA SHEET - ISO 10545 AVERAGE VALUES

3	Water absorption	<10% (BIII)	13	Chemical resistance	Conforms
4	Breaking of rupture	>600N	14	Stain resistance	Class 5

SUSTAINABILITY INFORMATION



CLEANING + MAINTENANCE ADVICE

INITIAL WASHING

The initial washing is fundamental for good treatment results. The initial washing is aimed at removing any laying residues and building grime.

Product: Cloth

ROUTINE MAINTENANCE

The aim of the routine maintenance is to remove dirt and scuff marks. Must be carried out regularly.

Product: FilaCleaner

Please see www.filasolutions.com for methods of use, dilution and coverage.