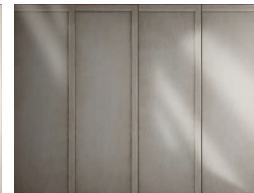
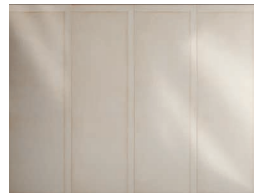
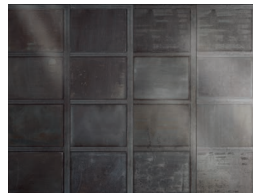
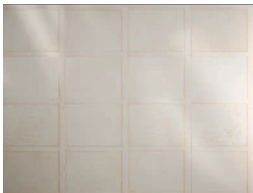


Ribbed

- Exclusively by Grestec
- Made in collaboration with Diesel Living + Iris Ceramica
- Industrial style



grestec.co.uk / 0345 130 2241



RIBBED ASH

RIBBED BLACK

ASH WALL

TAUPE WALL

BLACK WALL

SIZES (MM)	THICKNESS	FINISHES
1 200x600	7MM	SATIN

1

REQUEST SAMPLES, PRINT COLOURS MAY VARY.

FIND US ON:



Technical specification

Technical Characteristic	Standard	Average Values	
Sizes	ISO 10545-2	Lenth + width	+/- 0.5%
		Thickness	+/- 5%
		Linearity	+/- 0.3%
		Wedging	+/- 0.4%
		Warpage	+/- 0.3%
Water absorption	ISO 10545-3	16%	
Modulus of rupture	ISO 10545-4	22 N/mm ²	
Coefficient of linear thermal expansion	ISO 10545-8	8x10-6oC-1	
Resistance to thermal shock	ISO 10545-9	Guaranteed	
Crazing resistance	ISO 10545-11	Guaranteed	
Resistance to stains	ISO 10545-14	Class 5	

Cleaning and maintenance advice

Initial washing

The initial washing is fundamental for good treatment results. The initial washing is aimed at removing any laying residues and building grime.

Equipment	Cloth
Procedure	<ul style="list-style-type: none"> Clean off cement stains from grouting and other building work, which once hardened, will not be removed during any normal cleaning procedure. Polish wall tiling with a dry cloth when joints are hard.

Routine maintenance

The aim of the routine maintenance is to remove dirt and scuff marks. Must be carried out regularly.

Product	Filacleaner (Diluted 1:50 in warm water)
Equipment	Cloth
Procedure	<ul style="list-style-type: none"> Remove dust with a dry cloth Wash with FilaCleaner using a cloth that should be soaked often in the solution and wrung out well

FIND US ON:

